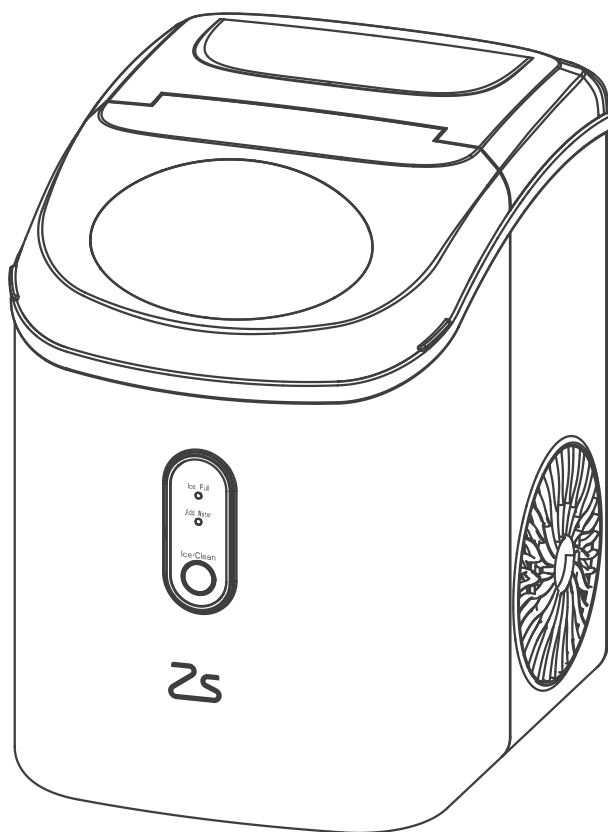




Nugget Ice Maker IZ03

USER MANUAL

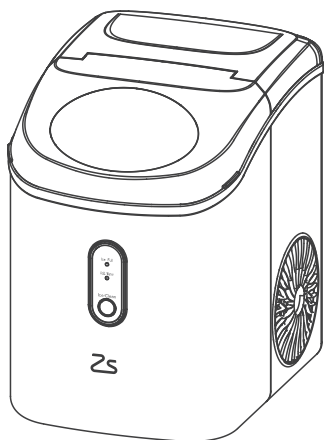


It is important that you read these instructions before using your portable ice maker and we strongly recommend that you keep them in a safe place for future reference.

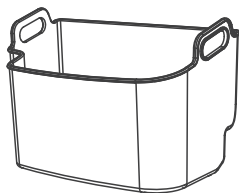
CONTENTS

PACKAGE CONTENT	01
SPECIFICATIONS	01
GETTING TO KNOW YOUR UNIT	02
IMPORTANT SAFETY INSTRUCTIONS	03
OPERATING PROCEDURES	05
Unpacking Your Ice Maker	05
How to start the unit	05
Cleaning Your Ice Maker	06
System Cleaning/Sanitizing Procedure	07
How to obtain the ice-cube	10
TROUBLESHOOTING	11
DISPOSAL AND WARRANTY INFORMATION	12

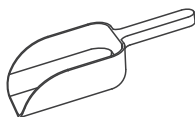
PACKAGE CONTENT



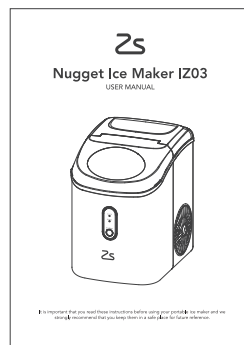
Ice Maker



Ice Basket



Ice Scoop

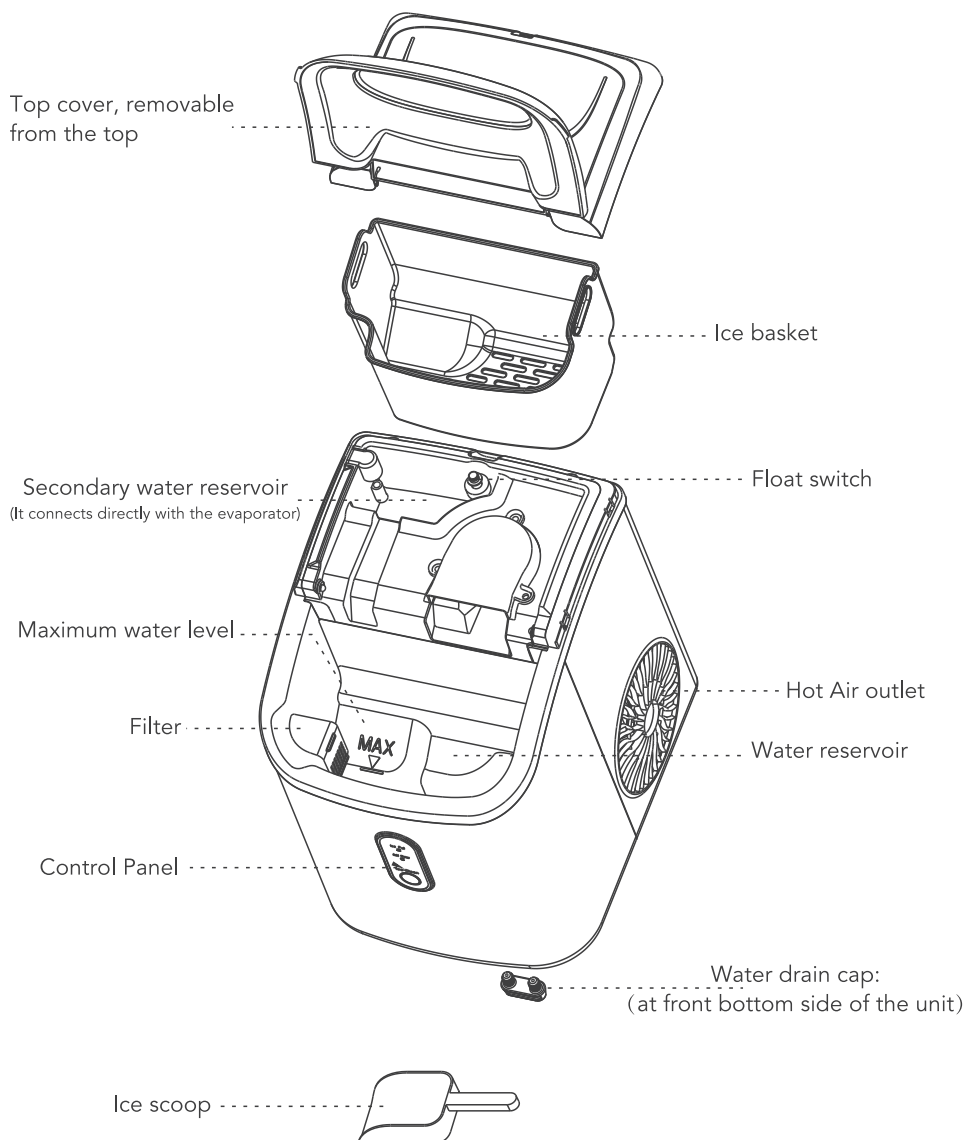


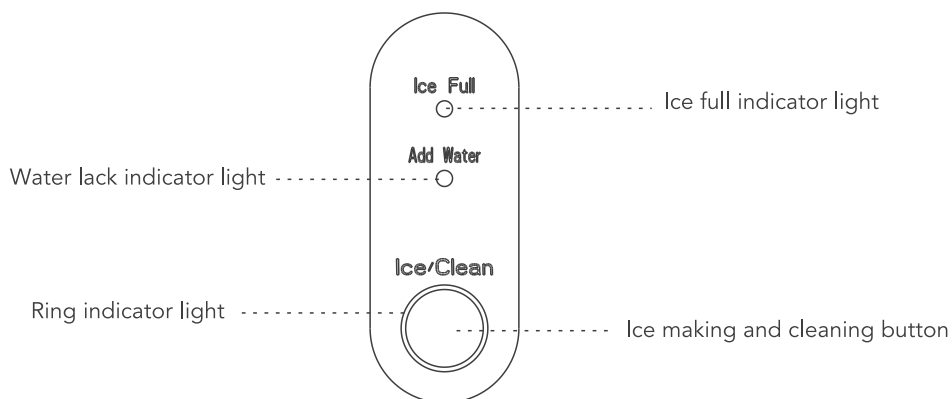
Manual

SPECIFICATIONS

Voltage/Frequency	115V/60Hz
Current	2.7A
Ice storage capacity	1.4 lbs
Ice making rate	33 lbs per day /1.3 lb per hour
Operating environment	55°F - 90°F
Refrigerant	R600a / 16g
Vesicant	C ₅ H ₁₀
Net Weight	20.3 lbs
Dimensions	11.29 in x 8.66 in x 12.68 in

GETTING TO KNOW YOUR UNIT





IMPORTANT SAFETY INSTRUCTIONS

Your safety as well as the safety of others are of utmost importance.

We have provided many important safety messages both in this manual as well as on your appliance. Always read and obey all safety messages.

This is the safety alert symbol: 

All safety messages will follow the safety alert symbol and the word "DANGER" or "WARNING".



DANGER



WARNING

When we use these words we mean:

Death or serious injury may occur if you don't immediately follow instructions.

All safety messages will tell you what the potential hazard is, how to reduce the chance of injury, and what can happen if the instructions are not followed.

IMPORTANT SAFETY TIPS



WARNING

To reduce the risk of fire, explosion, electric shock, exposure to UV radiation, or injury when using your ice maker, follow these basic safety precautions.

- Do not operate this ice maker with a damaged cord. If the supply cord is damaged, it must be replaced before using the ice maker again by the manufacturer or its service agent or a similarly qualified person in order to avoid a hazard.
- This ice maker must be positioned where the plug is accessible.
- Only connect to properly grounded outlets. No other appliance should be plugged into the same outlet. Be sure that the plug is fully inserted into the socket.
- Do not, under any circumstances, alter or remove the third (ground) prong from the power cord. For personal safety, this product must be properly grounded.
- Do not run the power cord over carpeting or other heat insulators. Do not cover the cord. Keep the cord away from traffic areas (areas that receive a lot of movement i.e. people walking), and do not submerge it in water.
- We do not recommend the use of an extension cord, as it may overheat and become a fire risk. If you must use an extension cord, the cord must be of No.14AWG minimum size with its rated watts no less than 1875W.
- Unplug the ice maker before cleaning, draining, repairing or storing.
- Exercise caution and ensure appropriate supervision when the appliance is used near children.
- Place the ice maker away from direct sunlight and make sure that there is at least 6 inches of clearance between the back of your unit and wall. The minimum clearance from each side of the unit must be no less than 6 inches.
- Do not use liquids other than drinkable water to make ice cubes.
- Do not clean your ice maker with flammable fluids. The fumes can create a fire hazard or explosion.
- If the ice maker is brought in from outside in wintertime, give it a few hours to warm up to room temperature before plugging it in.
- Do not tip the unit over. To avoid a hazard due to instability of the appliance, it must be placed on an even and flat surface.

WARNING: This appliance must be earthed.

DANGER

- Risk Of Fire Or Explosion. Flammable Refrigerant Used. To Be Repaired Only By Trained Service Personnel. Do Not Puncture Refrigerant Tubing.
- The ice maker should be installed in accordance with the safety standard for Refrigeration Systems, ASHRAE15. The ice maker shall not be installed in corridors or hallways of public buildings.
- If the unit is with problem need to be maintained, that replacing with like components and that servicing shall be done by factory authorized service personnel, so as to minimize the risk of possible ignition due to incorrect parts or improper service.

DANGER

Improper use of the grounded plug can result in the risk of electrical shock. If the power cord is damaged, please call our customer service.

- This unit should be properly grounded for your safety. The power cord of this appliance is equipped with a grounding plug which matches with standard grounding wall outlets to minimize the possibility of electric shock.
- Plug your appliance into a specialized grounding wall outlet that is properly installed. Do not under any circumstances damage the grounding means of the plug. Any questions concerning power and/or grounding should be directed toward a certified electrician.
- This appliance requires a standard 110-120 Volt, 60Hz electrical outlet with good grounding means.

OPERATING PROCEDURES

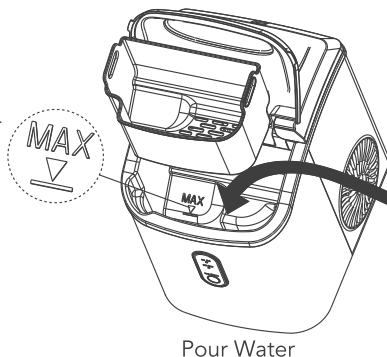
Unpacking Your Ice Maker

- Remove the exterior and interior packaging, and then check all the accessories are included. If any parts are missing, please contact our customer service.
- Remove all the tapes on the unit; take out the accessory parts inside.
- Clean the interior with lukewarm water and a soft cloth.
- Locating your ice maker on a level counter table far from direct sunlight and other sources of heat (i.e.: stove, furnace, and radiator). Make sure that there is at least 6 inches between the back and sides of your ice maker with the wall.
- Allow one hour for the refrigerant fluid to settle down before plugging your ice maker in.
- The power plug must be accessible directly.

WARNING: fill with potable water only. Only use drinking water.

How to start the unit

- Take out the ice basket, pour potable water into water reservoir, 0.3 gallon water at most at one time.
- Put back the ice basket.
- Plug in and the ring indicator will red light on. If you press the "ice /clean" button, the machine will start making ice; If long press the "Ice/Clean" button, it will do automatic cleaning.

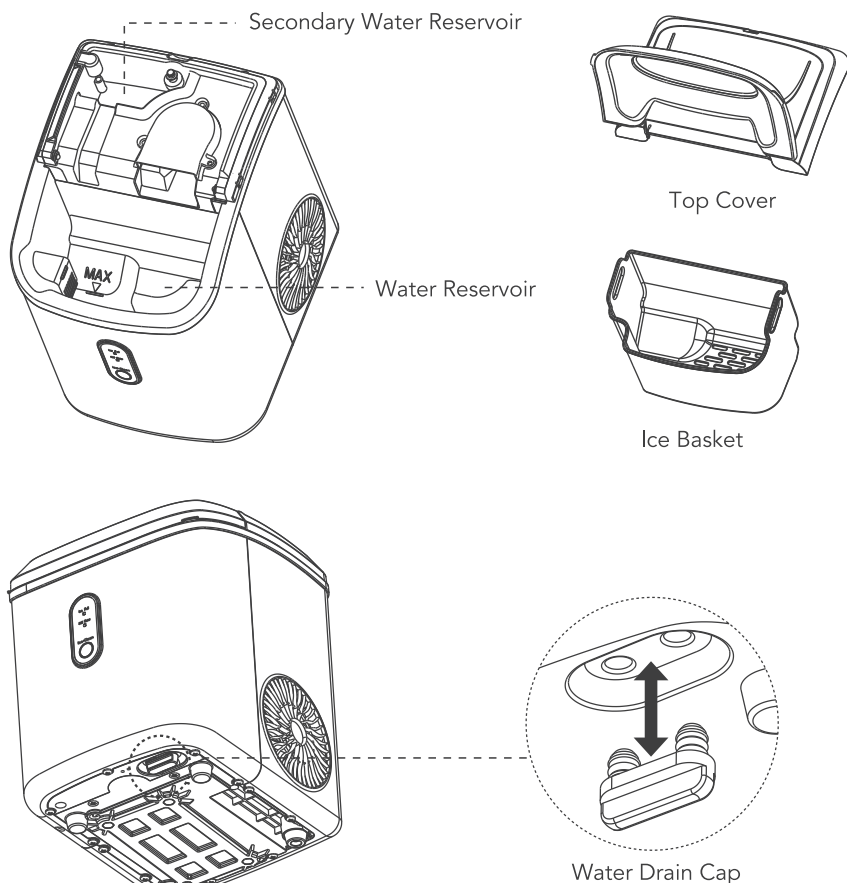


Pour Water

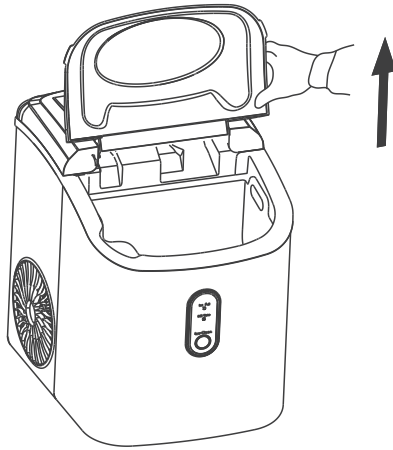
Cleaning Your Ice Maker

For the first time, or the clean procedure has not been running for a long time, it is highly recommended to run this procedure at first.

- Before clean procedure, please make sure the water drain cap has been inserted into the appliance; otherwise it will not work properly.
- Press "ICE/CLEAN" button for 5 seconds, Ring indicator light flashes white, it will run cleaning procedure for 15 minutes and automatically exit, press this button again during the cleaning procedure, it will exit immediately.
- After cleaning procedure, remove the top cover and the ice basket, rinse the main water reservoir and the secondary water reservoir, then move the appliance to the edge of the desktop, make sure that the appliance is placed steady, place a water container under the appliance, remove drain cap from the bottom, dirty water will drain into the water container, then reinsert the drain cap.



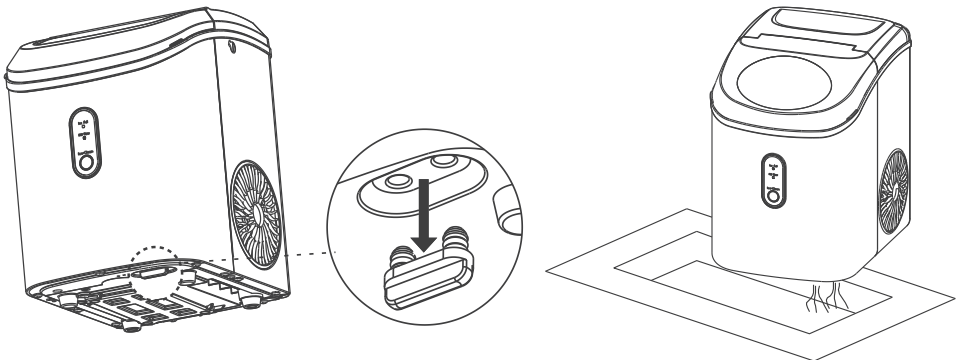
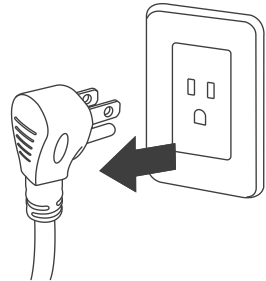
Tips: Remove the top back cover by pulling up the front clear cover gently.



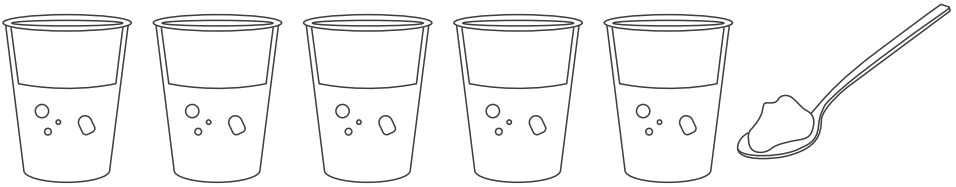
Change water in the water reservoir every 24 hours to ensure a reasonable hygiene level. If the unit isn't to be used, drain all water & dry the water reservoir.

System Cleaning/Sanitizing Procedure

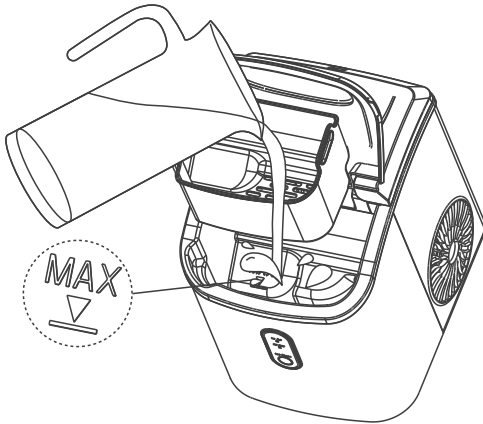
1. Unplug the nugget ice maker.
2. Take off the bottom drain cap and drain out the water to a sink. See the figure below.



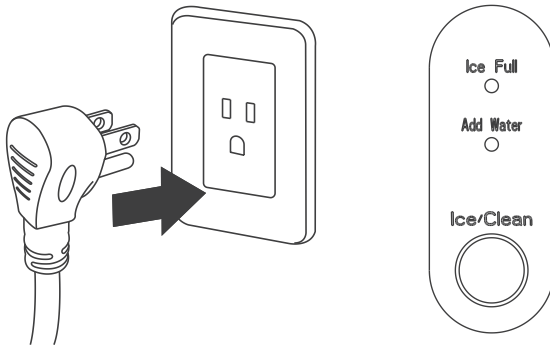
3. Produce a solution by diluting one teaspoon of household bleach with five cups of water for daily cleaning. For monthly cleaning of removing mineral deposits , please use the white vinegar instead of the above water solution (and then plug in to turn on the "cleaning function" for about 5 minutes. After that, unplug it again to leave the white vinegar in the unit more than 12hours).



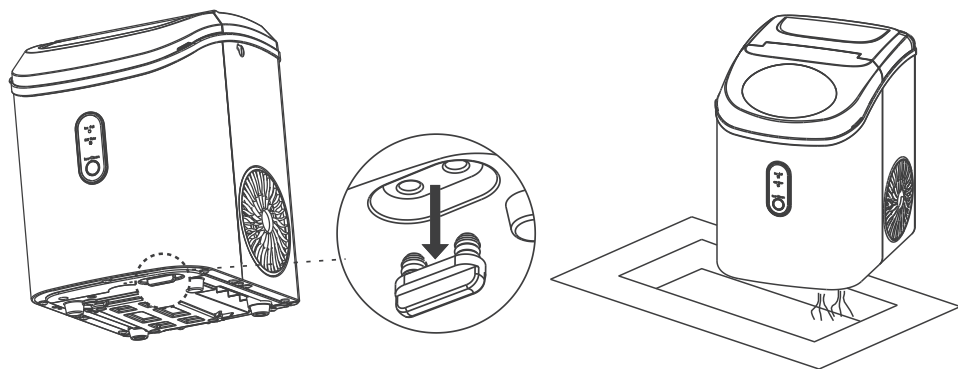
4. Pour the solution into the water reservoir, up to the "MAX" water level. See the figure below.



5. Plug in the Nugget ice maker,press and hold the "Clean" button for 5 seconds to initiate the cleaning process(15mins). See the figure below.

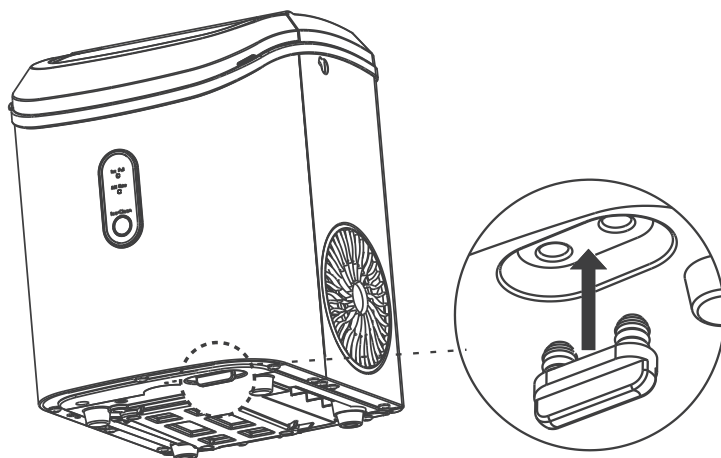


6. When the "cleaning" indicator lights off, take off the drain cap and drain out the water to a sink.

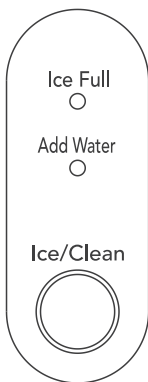


7. Repeat the step 4 to 6 with fresh water for two more cycles to rinse the inside.

8. Replace the drain cap on the bottom. See the figure below.



9. When completed, fill the unit with fresh water and press the "Ice" button to start ice making process. See the figure below.



How to obtain the ice-cube

- Before we start making ice, please make sure the water drain cap has been inserted into the appliance; otherwise it will not work properly.
- Press "ICE/CLEAN" button , Ring indicator light flashes white, it begin to work, Press this button again, it will stop making ice.
- For the first time, or if the appliance has not been used for a long time, it is recommended to clean this appliance before you start to make ice.
- In the process of making ice, if the "Add water" indicator light is on, and the machine stops working, it needs adding water. After adding water, please restart the machine; Otherwise,
- it needs waiting for a long time and then automatically start making ice again. When the ice making machine is restarted, the compressor will have a waiting time of 3 minutes.
- When the machine is full of ice, it will automatically stop working. The "ice full" indicator light will be on, and the ring indicator light will be white. After the ice is removed, the machine starts working automatically.

TROUBLESHOOTING

Problem	Possible Cause	Solution
"Add Water " indicator turns on	Lack of Water.	Stop the ice maker, fill water, and press "ICE/CLEAN" button again to restart the unit.
"ICE FULL" indicator turns on	There is too much ice.	Suggest you to obtain the ice-cube.
	No ice cube inside	Remove the probable obstacle inside or clean the inside wall of the ice storage
Ring indicator light flashes red	Ambient temperature or water temperature in inner tank is too high.	Please run the ice maker below 90°F ambient temperature and pour colder water into tank.
	Refrigerant liquid leakage.	Press the ICE button twice, restart ice making program, if this problem show up again, verify by a qualified technician.
	Cover motor is broken	
	Pipe in the cooling system is blocked.	
Making Ice too slowly	Hot Air outlet has been blocked by something.	Hot Air outlet must be guaranteed to have more than 15 CM of ventilation distance.
	Water temperature in inner tank is too high.	Water temperature requirement between 45°F~90°F.
	Refrigeration system malfunctions.	Verify by a qualified technician.
Water leakage	Drain plug not in place	Put the drain plug in place.
	Pipe Joint in the appliance may Loose	Verify by a qualified technician.
	The seal has reached service life	Verify by a qualified technician.

NOTE: Certain noises are normal when operating this ice maker. For instance, a clicking sound when the machine is turned on or off, a bubbling, gurgling, or knocking sound when refrigerant is circulating through the pipes, or a loud clink sound when ice cubes are dropped into the basket.

DISPOSAL AND WARRANTY INFORMATION

Disposal

When the unit is not to be used anymore, you must dispose of this unit's material in accordance with national regulations.

Limited Manufacturer's Warranty

This appliance is covered by a limited manufacturer's warranty. For one year from the original date of purchase, the manufacturer will repair or replace any parts of this appliance that prove to be defective in material or workmanship, provided the appliance has been used under normal operating conditions as intended by the manufacturer.

Warranty Terms

During the first year, any components of this appliance found to be defective due to materials or workmanship will be repaired or replaced, at the manufacturer's discretion, at no charge to the original purchaser. The purchaser will be responsible for any removal or transportation costs.

Warranty Exclusions

The warranty will not apply if damage is caused by any of the following:

- Power failure
- Damage in transit or when moving the appliance
- Improper power supply such as low voltage, defective household wiring, or inadequate fuses
- Accident, alteration, misuse or abuse of the appliance such as using non-approved accessories, inadequate air circulation in the room or abnormal operating conditions (extreme temperatures)
- Use in commercial or industrial applications
- Fire, water damage, theft, war, riot, hostility or acts of God such as hurricanes, floods, etc.
- Use of force or damage caused by external influences
- Partial or completely dismantled appliances
- Excess wear and tear by the user

Obtaining Service

When making a warranty claim, please have the original bill of purchase with purchase date available. Once confirmed that your appliance is eligible for warranty service, all repairs will be performed by a Zstar™ authorized repair facility. The purchaser will be responsible for any removal or transportation costs. Replacement of parts and/or units will be new, re-manufactured or refurbished and are subject to the manufacturer's discretion. For technical support and warranty service, please email support@zstarlife.com.

Model: HZB-15N/S
Email: support@zstarlife.com
Made in China



材质：128克铜版纸

印刷：双面印（骑马钉）

尺寸：148X210mm