

CDEH Description From The 1964 DOD OCD Annual Statistical Report

Federal responsibility for various medical and health functions in both natural and man-made disasters is assigned to Department of Health, Education, and Welfare, U. S. Public Health Service, (USPHS).

The Division of Health Mobilization, Office of the Surgeon General, provides the program direction and service coordination for such activities. Included is the management of the Civil Defense Medical Stockpile which is designed to augment postattack domestic inventories of medical supplies and equipment essential to survivor medical care and to replace hospital beds which may have been destroyed or rendered unavailable due to radioactive fallout.

The nucleus of the medical stockpile is the Civil Defense Emergency Hospital (CDEH). It is an austere but completely functional 200-bed general hospital designed to be set up within an existing structure such as a school, church, or community center which has been preselected by competent local authorities.

The CDEH has the primary mission of assuring the continuity of essential medical care services at community level during the early postattack phase. The material contained in the CDEH provides a functionally balanced stock directly related to the potential medical care workload which may be experienced within a community during the postattack period. Accordingly, the unit constitutes a valuable resource asset which may be the only reliable source of material for expanding existing hospitals or as replacement for destroyed facilities.

To set up the CDEH requires a floor area of 15,000 square feet which will permit separation of wards, operating rooms and other functional sections; and a suggested staffing complement of 10 physicians, 4 administrators and assistants, 34 professional nurses, 18 practical nurses, 6 anesthetists, 2 pharmacists, 128 medical aides and 124 other personnel, including dentists, laboratory technicians, X-Ray technicians, maintenance engineers, clerks, helpers, messengers, and housekeepers to be drawn from local resources.

The CDEH contains provisions for the following departments: laboratory; pharmacy; X-Ray; operating rooms, including multiple operating suites; wards, admitting and sorting, and central supply. Auxiliary equipment included is a limited supply of medical and administrative records, a 15 KW generator to provide auxiliary power if local electrical supply is disrupted, and a 1,500 gal lon water tank and pumping unit for emergency water supply.

CDEH's are assigned by Federal-State agreements, based on carefully developed criteria which include such factors as strategic locations, adequacy of storage facility and responsible custodianships.

The CDEH is organized to function independently, or in conjunction with existing hospitals.

CIVIL DEFENSE EMERGENCY HOSPITALS
Locations by OCD Regions and States
FY 1964

Area	Total Quantity	Number in Training	Number Prepositioned	Area	Total Quantity	Number in Training	Number Prepositioned
<u>Total</u>	<u>1,930</u>	<u>112</u>	<u>1,818</u>	<u>Region 5</u>	<u>171</u>	<u>10</u>	<u>161</u>
<u>Region 1</u>	<u>296</u>	<u>8</u>	<u>288</u>	Arkansas	16	1	15
Connecticut	32	0	32	Louisiana	31	1	30
Maine	18	1	17	New Mexico	12	1	11
Massachusetts	52	2	50	Oklahoma	20	2	18
New Hampshire	7	1	6	Texas	92	5	87
New Jersey	84	1	83	<u>Region 6</u>	<u>197</u>	<u>15</u>	<u>182</u>
New York	61	1	60	Colorado	36	3	33
Rhode Island	14	1	13	Iowa	20	1	19
Vermont	14	1	13	Kansas	15	2	13
Puerto Rico	12	0	12	Missouri	72	3	69
Virgin Islands	2	0	2	Nebraska	18	2	16
<u>Region 2</u>	<u>395</u>	<u>14</u>	<u>381</u>	North Dakota	13	1	12
Delaware	1	1	0	South Dakota	12	2	10
Dist of Columbia	-	-	-	Wyoming	11	1	10
Kentucky	25	0	25	<u>Region 7</u>	<u>213</u>	<u>12</u>	<u>201</u>
Maryland	34	2	32	Arizona	11	2	9
Ohio	119	3	116	California	151	2	149
Pennsylvania	170	6	164	Hawaii	11	4	7
Virginia	35	1	34	Nevada	21	2	19
West Virginia	11	1	10	Utah	19	2	17
<u>Region 3</u>	<u>238</u>	<u>8</u>	<u>230</u>	American Samoa	-	-	-
Alabama	40	1	39	Guam	-	-	-
Florida	37	2	35	<u>Region 8</u>	<u>96</u>	<u>5</u>	<u>91</u>
Georgia	27	1	26	Alaska	2	0	2
Mississippi	36	1	35	Idaho	11	1	10
North Carolina	35	0	35	Montana	11	1	10
South Carolina	25	2	23	Oregon	36	1	35
Tennessee	38	1	37	Washington	36	2	34
Canal Zone	-	-	-	<u>Others</u>	<u>38</u>	<u>18</u>	<u>20</u>
<u>Region 4</u>	<u>286</u>	<u>22</u>	<u>264</u>	In Depot Stocks	3	0	3
Illinois	60	10	50	In Depots for			
Indiana	29	4	25	Rehabilitation	34	17	17
Michigan	78	4	74	Loaned to Metropol-			
Minnesota	62	3	59	itan Life Insur-			
Wisconsin	57	1	56	ance Company	1	1	0

Source: U.S. Public Health Service, Department of Health, Education and Welfare

PACKAGED DISASTER HOSPITAL

Series 10000 Mod "A"

Component Listing and Storage Data

U.S. DEPARTMENT OF HEALTH, EDUCATION, AND WELFARE

Public Health Service

Health Services and Mental Health Administration

Division of Emergency Health Services

PACKAGED DISASTER HOSPITAL

TABLE OF CONTENTS

	<u>PAGE</u>
Introduction	v
Logistics	vi
Packing Lists	vii
Storage Code	viii
Proprietary Names	ix,x
Component Listing by Sections	
I Pharmaceuticals	1
II Hospital Supplies and Equipment	5
III Surgical Supplies and Equipment	11
IV Surgical Dressings and Textile Products	25
V Intravenous Solution and Transfusion Supplies ...	29
VI Dental Supplies.....	31
VII Laboratory Supplies and Equipment	35
VIII X-Ray	39
IX Hospital Records and Office Supplies	41
X Water Supplies.....	43
XI Electrical Supplies and Equipment	45
XII Texts and Manuals.....	47
XIII Maintenance and Housekeeping Supplies	49
XIV Tools	51
Index	53

INTRODUCTION

SERIES 10000 MOD "A"

PACKAGED DISASTER HOSPITAL

The components listed in this publication comprise a completely functional 200-bed Packaged Disaster Hospital (PDH) with a 30-day emergency operational capability. The Series 10000, Modification A, PDH (usually referred to as a Mod "A" PDH), as described herein, represents one type of updated and refurbished PDH.

The purpose of this publication is to provide a component listing of the Mod "A" by hospital section and packing case number. The items are presented in case number sequence, with components of mixed cases listed in alphabetical order. Other pertinent data and information on this PDH and its components are presented in the main list or in special tables.

The following information is provided on each component of the Mod "A" PDH:

1. Case number
2. Federal stock number
3. Storage code
4. Nomenclature
5. Unit of issue
6. Unit price
7. Total quantity per PDH

Weights and cubes of packing cases are included, as well as storage and transportation data summaries.

All information presented in this publication is subject to change without notice, as substitution of functionally equivalent items may be made in the assembly of Mod "A" PDH's to utilize existing depot stocks of materials or to reflect changes in medical practice. Such modifications may necessitate variations in the component schedules and packing arrangements in individual units.

LOGISTICS AND COMPOSITION
PACKAGED DISASTER HOSPITAL

THE HOSPITAL CONSISTS OF 585 LINE ITEMS PACKED IN 484 CASES.

STORAGE REQUIREMENTS

The following storage requirements are based on 6 foot stacking height plus dunnage and access aisles for inspecting stock:

	<u>No. of Cases</u>	<u>Total Cubic Feet</u>
Heated Storage (Items subject to damage by freezing)	7	30
Cold Storage (35 ^o to 46 ^o F)	5	24
Flammable Storage (Items which might constitute a fire hazard to other stocks)	15	50
General Storage (All other items)	457	5400

ITEMS FOR ROTATION

Some PDH agreements provide for the rotation of certain shelf-life items with an affiliated hospital. This may cause some variance with the overall logistics and storage requirements stated herein.

TRANSPORTATION DATA

Total Weight	35,535 lbs.
Total Cube	2,433.8 cu. ft.

PACKING LISTS

There are 51 cases containing an assortment of items in order to reduce the total number of boxes. Of these mixed cases, those with 4 or more different items are identified with a packing list in an envelope -- one copy attached to the outside of the box -- the other copy placed inside the box.

COMPONENT LISTING AND STORAGE DATA

This document serves as a master packing list for the entire hospital and a copy is attached to Case No. 633 (Water Tank), Case No. 690 (Mixed Case -- Tools) and inside Case No. 605 (Mixed Case -- Laboratory Supplies).

CASE NUMBERS

To readily identify the contents of each case, the following case numbers have been assigned:

<u>Section</u>	<u>Mixed Cases</u>	<u>Single Item Cases</u>
I	1/2, 6, 69	7/23, 26/61, 63/66, 68, 72/74, 708/712
II	78/82	83/252, 700/707, 713/718
III	254, 257/271, 273	274/296
IV	299, 301/306	307/308, 317/339, 341/343, 347/349, 353/423
V	--	427/428
VI	599/600	601/602
VII	604/606, 608	609/612
VIII	--	615/620
IX	623/624	625/627
X	629, 636	630/635
XI	637/638	639/645
XII	648	--
XIII	650/652	653/679, 688/689
XIV	690	--

Several numbers have not been used, but may be used in the future to permit replacements or additions to the hospital.

PRICE

The price per unit of issue, as stated in this publication, is a fixed average unit price computed on the basis of total quantity of an item procured for the medical stockpile. It does not reflect the current replacement cost of an item.

KEY TO STORAGE CODE COLUMN

Symbols shown below express the following:

- A No specialized storage requirements with respect to temperature; however, a dry, covered storage area is required.
- B Normal warehouse temperatures required not below 50° F nor above 86° F (for all localities).
- C Refrigeration temperatures required (35° to 46°F).
- I Flammable. Should be kept in separate area where it will not create fire hazard for other stocks.
- K Drug abuse control item.
- N Do not freeze; subject to damage by freezing (temperatures below 32°F).
- Po Items with potency period governed by expiration date.

PROPRIETARY NAMES
(Trade Names)

OF OFFICIAL DRUGS AND CHEMICALS

1. A selected list of proprietary names (trade names) are cross-referenced to their appropriate Federal item names as used in this publication.
2. Trade-name information related in any manner to the product of a manufacturer contained in this catalog is included only as an aid in the conduct of official business and does not indicate an endorsement of the product listed in preference to comparable products which may not be listed. The inclusion of a trade name in this list does not indicate that the manufacturer's specific item will be furnished or is in the supply system.

PROPRIETARY NAME

FEDERAL ITEM NAME

Adrenalin	Epinephrine
Chloromycetin	Chloramphenicol
Dilantin Sodium	Sodium Diphenylhydantoin
Lanoxin	Digoxin
Pentothal Sodium	Sodium Thiopental
Phenergan	Promethazine
Pontocaine	Tetracaine
Pronestyl	Procainamide
Pyribenzamine	Tripelennamine
Thorazine	Chlorpromazine
Xylocaine	Lidocaine
Zephiran	Benzalkonium

SECTION I

Pharmaceuticals

CASE NO.	FEDERAL STOCK NO.	STORAGE CODE	ITEM IDENTIFICATION	UNIT OF ISSUE	TOTAL QUANTITY	WEIGHT	CUBE
1	6505-000-0219	B	ATROPINE SULFATE TABLETS, USP, Soluble, 0.4 mg (1/150 gr), 100s	Bot 1.26	12		
1	6505-153-8468	A	BARIUM SULFATE, USP, 10 lb (4.54 kg)	Can 2.69	2		
1	6505-116-7685	B	DIGIIOXIN TABLETS, USP, 0.1 mg (1/600 gr), 100s	Bot .14	12		
1	6505-527-6886	B	HYDROCORTISONE TABLETS, USP, 20 mg (1/3 gr), Scored, 100s	Bot 2.20	6		
1	6505-153-8809	B	LUBRICANT, SURGICAL, Jelly, 4 oz (113.4 Gm)	Tube .15	48		
1	6505-133-8025	A	PETROLATUM, WHITE, USP, 1 lb (453.6 Gm)	Can .43	12		
1	6505-299-8607	B	PILOCARPINE HCl OPHTHALMIC OINTMENT, 2.0%, 1/8 oz (3.5 Gm) tube, 12s	Box 1.50	1		
1	6505-140-5000	A	SILVER NITRATE, USP, 1 oz (28.35 Gm)	Bot 1.10	48		
1	6505-116-9325	B	SODIUM DIPHENYLHYDANTOIN CAPSULES, USP, 100 mg (1-1/2 gr), 100s	Bot .44	1		
1	6505-147-1840	B	TETRACAINE HCl, USP, Spinal Anesthesia, Sterile, 15 mg (1/4 gr) ampul, 10s (For Diluent see Dextrose Injection, 6505-116-4603)	Box 1.80	16		
1	6505-147-1720	B	TETRACAINE OPHTHALMIC OINTMENT, USP, 0.5%, 1/8 oz (3.5 Gm) tube, 12s	Box .93	6		
1	6505-148-9000	B	TRIPLENNAMINE HCl TABLETS, USP, 50 mg (3/4 gr), 1000s	Bot 2.65	2		
						97	4.7
2	6505-160-0495	B, Po	CHLORAMPHENICOL CAPSULES, USP, 0.25 Gm (4 gr), 100s	Bot 13.68	6		
2	6505-116-4603	N, B	DEXTROSE INJECTION, USP, 10.0%, 3 ml ampul, 10s (Diluent for Tetracaine HCl 6505-147-1840)	Box .52	12		
2	6505-531-7761	N, B	DIGOXIN INJECTION, USP, 0.25 mg (1/250 gr) per ml, 2 ml ampul, 12s	Box 1.32	12		
2	6505-299-8760	N, B	EPINEPHRINE INJECTION, USP, 1 1000, 1 ml ampul, 25s	Box 1.28	5		
2	6505-753-9609	N, B	HYDROCORTISONE SODIUM SUCCINATE FOR INJECTION, USP, Sterile, Equivalent to 100 mg of Hydrocortisone Base, in Mixing Bottle with Diluent	Bot 1.47	50		
2	6505-598-6117	N, B	LIDOCAINE HCl INJECTION, USP, 2.0%, 20 ml	Bot .31	72		
2	6505-237-8480	B, Po	POTASSIUM PENICILLIN G TABLETS, USP, BUFFERED, Oral, 250,000 Units, 100s	Bot 1.28	24		
2	6505-584-3280	N, B	PROMETHAZINE HCl INJECTION, USP, 25 mg (3/8 gr) per ml, 10 ml	Bot .90	10		

PHARMACEUTICALS

CASE NO.	FEDERAL STOCK NO.	STORAGE CODE	ITEM IDENTIFICATION	UNIT OF ISSUE	TOTAL QUANTITY	WEIGHT	CUBE
2	6505-559-8456	N, B	SODIUM CHLORIDE INJECTION, USP (Normal Saline Solution), 5 ml ampul, 25s	Box 1.58	24		
2	6505-133-0812	N, B, K, Po	SODIUM THIOPIENTAL FOR INJECTION, USP, 5 Gm (75 gr) ampul, 25s	Box 11.58	2		
2	6505-655-8353	B, Po	TETRACYCLINE HCl CAPSULES, USP, 0.25 Gm (4 gr), 100s	Bot 11.60	40		
						<u>44</u>	<u>2.6</u>
6	6505-160-5845	N,C,Po	INSULIN INJECTION, USP, 80 Units per ml, 10 ml	Bot .57	50		
6	6505-299-8614	C,N	PROCAINAMIDE HCl INJECTION, USP, 100 mg (1-1/2 gr) per ml, 10 ml	Bot .73	1		
6	6505-680-2433	C, Po, N	TETANUS TOXOID, USP, 7.5 ml	Bot .20	36		
						<u>8</u>	<u>0.3</u>
7	6505-153-8750	B	ASPIRIN TABLETS, USP, 0.324 Gm (5 gr), 1000s	Bot .71	36	61	2.6
8	6810-000-0208 or 6810-071-0450	I	ALCOHOL, DENATURED, Special Denatured Alcohol Formula No. 23H, 1 qt (For Burner, Alcohol, 6640-410-2820, Section II)	Bot 1.12	6	14	0.4
9	6505-149-8705	B, N	BENZALKONIUM CHLORIDE SOLUTION, USP, 10.0%, 4 fl oz (118 ml)	Bot .16	96	61	2.6
10/21	6505-000-0230	A	ENTERAL FEEDING FORMULA (Nasogastric or Oral), with Feeding Tube, 5 lb	Can 1.39	144	972	28.8
22/23	6505-664-7116	B, Po	POTASSIUM PENICILLIN G FOR INJECTION, BUFFERED, USP, 1,000,000 Units	Bot .07	3200	276	14.0
26/31	6505-000-0661 or 6505-261-7296	I	ISOPROPYL ALCOHOL, NF, 1 qt (946 ml)	Bot .47	72	234	8.4
32	6505-660-0138	B, Po	TETRACYCLINE HCl FOR INJECTION, USP, Powder, 0.5 Gm (7-1/2 gr)	Bot 2.26	144	17	1.0
33/40	6505-130-1940	A	NITROUS OXIDE, USP, Filled Size M Cylinder, 2000 gal (7.57 kl)	Each 40.77	8	808	11.2
41/60	6505-132-5225	A	OXYGEN, USP, Filled Size M Cylinder, 750 gal (2.84 kl)	Each 31.61	20	1580	28.0
61	6505-133-9600	B, K	PHENOBARBITAL TABLETS, USP, 32 mg (1/2 gr), 100s	Bot .09	264	48	2.4
63/64	6505-141-1900	A	SOAP, SURGICAL, with 2.0% Hexachlorophene, 4 oz (113.4 Gm)	Cake .08	288	94	2.0
65/66	6505-153-8515	A	SODA LIME, USP, 4-8 Mesh (For use with Anesthesia Machine), 5 lb (2.27 kg)	Bot 1.89	12	102	3.2
68	6505-663-2636	B	SODIUM CHLORIDE - SODIUM BICARBONATE MIXTURE, 4.5 Gm packet (Sodium Chloride, USP, 3 Gm; Sodium Bicarbonate, USP, 1.5 Gm), 2s	Pkg .05	720	44	1.1
69	6505-597-5843	N	CHLORPROMAZINE HCl INJECTION, USP, 25 mg per ml, 2 ml, 6s	Box 2.00	8		
69	6505-735-3559	B	CHLORPROMAZINE HCl TABLETS, USP, 25 mg Sugar Coated, LCCs	Bot 3.60	8		
						<u>15</u>	<u>0.5</u>

PHARMACEUTICALS

CASE NO.	FEDERAL STOCK NO.	STORAGE CODE	ITEM IDENTIFICATION	UNIT OF ISSUE	TOTAL QUANTITY	WEIGHT	CUBE
72	6505-146-2200	B	SULFADIAZINE TABLETS, USP, 0.5 Gm (7-1/2 gr), 1000s	Bot 8.98	12	37	1.1
73/74	6505-543-4048	N, B	WATER FOR INJECTION, STERILE, USP, 5 ml ampul, 25s	Box 1.19	144	152	9.4
708/712	6505-153-8225	I	ETHER, USP, for Anesthesia, 1/4 lb (113.4 Gm)	Can .23	480	235	9.0

SECTION II

Hospital Supplies and Equipment

CASE NO.	FEDERAL STOCK NO.	STORAGE CODE	ITEM IDENTIFICATION	UNIT OF ISSUE	TOTAL QUANTITY	WEIGHT	CUBE
78	8105-600-3000	A	BAG, COTTON DUCK, SAND, with Drawstring Closure, Empty, 3 x 4 x 8" (For Traction Weight and Patient Positioning on X-ray Table)	Each .35	12		
78	8105-600-4000	A	BAG, COTTON DUCK, SAND, with Drawstring Closure, Empty, 4 x 5 x 18" (For Traction Weight and Patient Positioning on X-ray Table)	Each .65	12		
78	6530-404-7500	A	BOTTLE, DROPPER, Prescription, Glass, Oval, Screw Cap with Glass Dropper and Bulb, 1/2 oz, 12s	Box .48	6		
78	6530-406-0150	A	BOTTLE, SCREW CAP, Prescription, Glass, with Plastic Cap, 2 oz, 72s	Pkg 1.55	2		
78	6530-406-0210	A	BOTTLE, SCREW CAP, Prescription, Glass, with Plastic Cap, 8 oz, 36s	Pkg 1.64	1		
78	6640-418-0000	A	CLAMP, Rubber Tubing, Shutoff, Mohr's	Each .13	36		
78	6640-445-4105	A	CONNECTOR, Elastic Tubing, Branched, Glass, Y-shaped, 8 mm OD, for 1/4" ID Rubber Tube	Each .14	36		
						<u>76</u>	<u>4.7</u>
79	7920-772-5800	A	BRUSH, SANITARY, Bedpan	Each .60	12		
79	7920-772-5935	A	BRUSH, SCRUB, Nylon (Surgeon's Hand Brush)	Each .32	36		
79	6640-410-2820	A	BURNER, ALCOHOL, Metal, Self-generating, Barthel Type, 8 oz Capacity (For Alcohol see 6810-071-0450, Section I)	Each 4.45	6		
79	6640-000-0204	A	CONNECTOR, Nylon or Plastic, 5 in 1, Rubber Tubing, 3-1/2" Long, Ring Diameters, 9/16, 1/2, 7/16, 3/8 and 5/16"	Each .11	50		
79	7240-985-7379	A	FUNNEL, Aluminum, 5", 1 pt	Each .81	6		
79	6640-427-5025	A	GRADUATE, LIQUID, LABORATORY, Conical, CRM, without Handle, Graduated in Metric and Apothecary Scales, 500 ml	Each 1.60	1		
79	6640-431-4520	A	GRADUATE, LIQUID, LABORATORY, Conical, CRM, with Handle, Graduated in Metric and Apothecary Scales, 1000 ml	Each 3.18	8		
79	6640-427-5085	A	GRADUATE, LIQUID, LABORATORY, Conical, Glass, without Handle, Graduated in Metric and Apothecary scales, 25 ml	Each 1.74	2		
79	6640-427-5120	A	GRADUATE, LIQUID, LABORATORY, Conical, Glass, without Handle, Graduated in Metric and Apothecary Scales, 100 ml	Each 2.50	2		
79	6640-427-5165	A	GRADUATE, LIQUID, LABORATORY, Conical, Glass, without Handle, Graduated in Metric and Apothecary Scales, 250 ml	Each 2.33	2		

HOSPITAL SUPPLIES AND EQUIPMENT

CASE NO.	FEDERAL STOCK NO.	STORAGE CODE	ITEM IDENTIFICATION	UNIT OF ISSUE	TOTAL QUANTITY	WEIGHT	CUBE
79	6640-427-5210	A	GRADUATE, LIQUID, LABORATORY, Conical, Glass, without Handle, Graduated in Metric and Apothecary Scales, 500 ml	Each 4.85	2		
79	6640-427-5250	A	GRADUATE, LIQUID, LABORATORY, Conical, Glass, without Handle, Graduated in Metric and Apothecary Scales, 1000 ml	Each 5.31	1		
79	6530-770-6035	A	NOZZLE, RECTAL IRRIGATING, Hard Rubber, Adult, 3" Long (See Irrigator, 6530-782-2075)	Each .04	12		
79	6530-770-6055	A	NOZZLE, VAGINAL IRRIGATING, Hard Rubber, Adult, 5-1/2" Long (See Irrigator, 6530-782-2075)	Each .07	12		
79	6530-663-1555	A	PIN, SAFETY, Curved, Orthopedic, Large, 12s	Card .12	36		
						<u>47</u>	<u>4.7</u>
80	6530-782-7180	A	JAR, FORCEPS, CRS, 7-5/8"	Each 2.62	12		
80	7240-773-0985	A	LID, Metal Pail, CRS (For Pail see 7240-773-0975)	Each 1.94	12		
80	6530-780-7000	A	MEDICINE GLASS, Graduated, 1 oz	Each .04	96		
80	6530-713-5200	A	SLING, HEAD AND SHOULDERS, Sayre Type	Each 8.89	6		
						<u>80</u>	<u>4.7</u>
81	6530-663-1556	A	PIN, SAFETY, Curved, Orthopedic, Medium, 12s	Card .11	36		
81	8315-810-1500	A	PIN, SAFETY, Horse Blanket, Medium, 4"	Each .05	432		
81	7510-223-6898 (7510-551-4344)	A	PIN, STRAIGHT, CRS, in Pyramid Holder, 1-1/16" 300s	Pack .14	12		
81	6530-422-8120	A	PIPET DROPPING (Medicine Dropper), Plain Tip, Not Graduated, Glass, Rubber Bulb, 12s	Box .16	12		
81	6530-793-9570	A	TRAY, INSTRUMENT, CRS, without Cover, 19-1/4 x 12-3/4 x 3/4" (Fits Stand, Surgical, 6530-708-1610)	Each 3.25	18		
81	6515-387-5200	A	TUBE, IRRIGATOR, SURGICAL, Valentine, Rubber, 7 ft (For use with Irrigator, 6530-782-2075)	Each .92	24		
						<u>96</u>	<u>4.7</u>
82	6515-299-8263	A	THERMOMETER, CLINICAL, HUMAN, Mercury Type, Rectal, without Case, 6s	Pkg 1.22	6		
82	6515-299-8258	A	THERMOMETER, CLINICAL, HUMAN, Mercury Type, Oral, without Case, 6s	Pkg 1.52	48		

HOSPITAL SUPPLIES AND EQUIPMENT

CASE NO.	FEDERAL STOCK NO.	STORAGE CODE	ITEM IDENTIFICATION	UNIT OF ISSUE	TOTAL QUANTITY	WEIGHT	CUBE
82	6515-777-7355	A	TIP, CANE AND CRUTCH, Corrugated Rubber (For Crutch see 6515-777-7325)	Each .14	48		
82	6530-793-9600	A	TRAY, INSTRUMENT, CRS, with Cover, 8-7/8 x 5 x 2"	Each 2.40	20		
						59	4.7
83	6530-770-6425	A	BAG, HOT WATER-ICE, Rubber, Stopperless Closure, 2 qt	Each .84	36	48	4.7
84	6530-770-9220	A	BASIN, EMESIS, CRS, Kidney Shaped	Each 1.10	60	41	1.9
85	6530-771-0105	A	BASIN, WASH, CRS, 7 qt	Each 3.39	18	49	3.4
86	7240-634-2424	A	BASIN, WASH, Seamless Aluminum, with Rim, 12-1/4 x 4-1/2"	Each .69	50	43	2.7
87/89	6530-771-7025	A	BEDPAN, CRS, Oval Shaped, 7 qt (For liner see 6530-771-7055)	Each 6.68	36	189	25.5
90/91	6530-326-8880	A	BOTTLE, SCREW CAP, Jug Type, Glass, 1 gal (For use with Drainage and Suction Apparatus, 6515-326-8875, Section III)	Each .28	28	124	14.4
92	6530-406-0180	A	BOTTLE, SCREW CAP, Prescription, Glass, with Plastic Cap, 4 oz, 72s	Pkg 1.86	4	103	6.0
93	6530-406-0240	A	BOTTLE, SCREW CAP, Prescription, Glass, with Plastic Cap, 16 oz, 18s	Pkg 1.46	4	84	5.6
94	6530-406-0270	A	BOTTLE, SCREW CAP, Prescription, Glass, with Plastic Cap, 32 oz	Each .11	54	99	6.6
95	6530-772-0326	A	BOWL, SPONGE, CRS, 6-1/4 x 3-1/8"	Each 1.48	24	41	4.0
96/195	7105-269-9279	A	COT, Folding, Canvas Cover, Wood Frame	Each 7.00	200	5000	230.0
196/201	7105-000-0212	A	COT, Litter, Aluminum, Double Decker, with Wheels and Folding Legs	Set 65.69	6	510	61.8
202/203	6515-777-7325	A	CRUTCH, Adjustable, Wood (For Tips see 6515-377-7355)	Pair 3.04	24	144	18.0
204	7350-290-0571	A	CUP, PAPER, Medicine Cup, 1 oz, Graduated, 100 to Box, 50 Boxes to Carton	Ctn 23.50	1	61	2.7
205	7350-290-0580	A	CUP, PAPER, Portion Cup (Souffle), Treated, 1 oz, 250 to Box, 20 Boxes to Carton	Ctn 5.87	1	20	1.7
206	7350-162-3006	A	CUP, PAPER, Hot Food or Drink, without Lid and Handle, Tall Cup, 8 oz, 50 to Box, 20 Boxes to Carton	Ctn 9.33	1	36	3.2
207/211	6530-000-0233	A	FRAME, OVERHEAD, HOSPITAL BED, Wood, Balkan Type (Modified), Complete	Each 27.87	10	650	27.0

HOSPITAL SUPPLIES AND EQUIPMENT

CASE NO.	FEDERAL STOCK NO.	STORAGE CODE	ITEM IDENTIFICATION	UNIT OF ISSUE	TOTAL QUANTITY	WEIGHT	CUBE
212	6530-782-2075	A	IRRIGATOR, CRS, without Handle, 2 qt (See Nozzle, Rectal Irrigating, 6530-770-6035; Nozzle, Vaginal Irrigating, 6530-770-6055; Rod, Irrigating Supporting, 6530-792-6000; Tube, Irrigator, 6515-387-5200)	Each 3.13	24	49	4.4
213	6530-299-8068	A	JAR, SURGICAL DRESSING, with Telescopic Type Cap, Aluminum, Nesting	Each 4.13	24	43	7.5
214/216	6530-706-5100	A	LIGHT, FLOOR, Portable, Operating and Examining, Flexible Arm, 110V, AC-DC	Each 13.00	12	165	28.5
217/219	6530-042-6342	A	LIGHT, FLOOR, Operating and Examining, 110V, AC-DC	Each 38.21	3	300	12.0
220/224	6530-771-7055	A	LINER, BEDPAN, Paper, Impervious, 24 x 24" (For Bedpan see 6530-771-7025)	Each .05	3000	315	15.5
225/228 700/707	6530-000-0001	A	LITTER, FOLDING, Rigid Pole	Each 8.22	72	2040	91.2
229	7240-773-0975	A	PAIL, METAL, CRS, without Lid, 12 qt (For Lid see 7240-773-0985)	Each 5.00	18	73	9.9
230	6530-299-8265	A	PITCHER, CLINICAL SOLUTIONS, with Removable Plastic Handle, Aluminum, Nesting, 3 qt	Each 3.91	24	42	3.4
231/232	9330-299-8558	A	SHEET, PLASTIC, Vinyl Copolymer Base, 3 x 15', Translucent	Roll .93	96	172	9.2
233	6530-792-6000	A	ROD, IRRIGATOR SUPPORTING, Single Hook, Telescopic Type (See Irrigator, 6530-782-2075)	Each 4.57	24	58	2.9
234/239	6530-708-1610	A	STAND, SURGICAL INSTRUMENT, Adjustable, Steel, White Enameled, with Removable Instrument Tray (For additional Trays see 6530-793-9570)	Each 23.08	6	300	73.2
240	6530-781-3684	A	STERILIZER, SURGICAL INSTRUMENT AND DRESSING, Horizontal, Pressure, Electrically and Fuel Heated, CRS, 8 x 8 x 16", 115V, 60 Cycle, AC, 1600 Watt Total Capacity	Each 640.63	1	520	28.0
241	6530-781-3683 (6530-000-0011)	A	STERILIZER, SURGICAL INSTRUMENT AND DRESSING, Horizontal, Pressure, Electrically and Fuel Heated, 16 by 36", 240-440V, 60 Cycle, AC, 8000 Watt Total Capacity, Complete with the Following Components: 7310-559-5214 Burner, Gasoline 4320-394-4144 Pump, Air Pressure 7240-230-2393 Funnel, with Strainer, Steel, 1 pt 7920-291-5815 Brush, Wire 5120-379-2490 Cleaner, Burner 7310-379-2459 Assembly Valve, Flame 7310-379-2534 Packing Valve	Each 972.61 Each Each Each Each Each Each	1 1 1 1 1 1 1	470	46.5
	or						
	6530-926-2151	A	STERILIZER, SURGICAL INSTRUMENT AND DRESSING, Steam, Electric or Gas Heated, 220 V				
242/244	6530-660-0034	A	SUPPORT, LITTER, Folding	Pair 24.69	12	165	12.0

HOSPITAL SUPPLIES AND EQUIPMENT

CASE NO	FEDERAL STOCK NO.	STORAGE CODE	ITEM IDENTIFICATION	UNIT OF ISSUE	TOTAL QUANTITY	WEIGHT	CUBE
245/249	6530-709-8155	A	TABLE, OPERATING, Field, Three Table-top Sections, with Carrying Case	Each 51.95	5	575	26.5
250/251	6530-709-9400	A	TRACTION APPARATUS, Bone Fracture, in Carrying Case, Portable	Each 103.58	2	156	7.0
252	6530-794-4090	A	URINAL, MALE PATIENT, CRS	Each 4.44	24	86	4.6
713/718	6530-781-3719	A	LIGHT, SURGICAL, STAND, Horizontal Arm Type, 110 V, AC-DC, and 12 V Battery	Each 74.37	3	498	40.9

SECTION III

Surgical Supplies and Equipment

CASE NO.	FEDERAL STOCK NO.	STORAGE CODE	ITEM IDENTIFICATION	UNIT OF ISSUE	TOTAL QUANTITY	WEIGHT	CUBE
254	6515-334-7500	A	FORCEPS, HEMOSTATIC, Straight, Rochester-Ochsner, 7-1/4"	Each 2.06	48		
254	6515-335-2900	A	FORCEPS, INTESTINAL, Straight, Babcock, 7-3/4"	Each 2.94	12		
254	6515-335-5800	A	FORCEPS, KIDNEY PEDICLE, Curved, Guyon-Pean, 9"	Each 4.65	4		
254	6515-336-7600	A	FORCEPS, OBSTETRICAL, Curved, Simpson, 14"	Each 19.53	2		
254	6515-337-2400	A	FORCEPS, SPLINTER, Tweezers, 3-1/2"	Each .54	3		
254	6515-332-5900	A	FORCEPS, SUTURE CLIP, Applying and Removing, Michel (For Clip, Suture, see 6515-375-4105)	Each 3.40	3		
254	6515-337-7800	A	FORCEPS, TISSUE, Tweezer Type, Adson, 4-1/2", 1 x 2 Teeth	Each 1.19	8		
254	6515-338-0300	A	FORCEPS, TISSUE, Pivoted Type, Straight, Allis, 6", 4 x 5 Teeth	Each 2.21	36		
254	6515-337-9900	A	FORCEPS, TISSUE, Tweezer Type, Straight, 5-1/2", 1 x 2 Teeth	Each .82	18		
254	6515-320-4590	A	FORCEPS, TOWEL, Backhaus, 3-1/2"	Each 1.61	36		
254	6515-320-4600	A	FORCEPS, TOWEL, Backhaus, 5-1/4"	Each 1.79	36		
254	6515-333-4200	A	FORCEPS, UTERINE PACKING, Box Lock, Serrated Jaws, Curved, Bozeman, 10"	Each 3.67	1		
254	6515-337-6400	A	FORCEPS, UTERINE, Tenaculum, Curved, Skene, 9-1/2"	Each 4.25	2		
254	6515-339-3200	A	GAG, Metal, Ratch and Pawl, Denhardt	Each 15.50	1		
254	6515-340-3200	A	GOUGE, BONE, Orthopedic, 6 mm, 6-3/4"	Each 3.40	1		
254	6515-363-2400	A	HANDLE, BONE CUTTING WIRE SAW, Gigli (For Saw, Bone, see 6515-363-2700; also see Conductor, 6515-363-2300)	Pair 1.27	2		
254	6515-344-7800	A	HANDLE, SURGICAL KNIFE, DETACHABLE BLADE, Narrow Nose, No. 3 (For Blade see 6515-660-0011)	Each .45	48		
254	6515-340-7900	A	HEADBAND, MIRROR, Leather, Jefferson, Adjustable, without Mirror (For Mirror see 6515-347-5200)	Each 1.79	4		
254	6515-341-9800	A	HOLDER, SUTURE NEEDLE, Masson, 10-1/2"	Each 3.02	3		
254	5110-344-9900	A	KNIFE, CHAISEMAN'S, Sawbill rigid Blade Linoleum Knife, Round Hardwood Handle, 1-1/2"	Each .37	4		

SURGICAL SUPPLIES AND EQUIPMENT

CASE NO.	FEDERAL STOCK NO.	STORAGE CODE	ITEM IDENTIFICATION	UNIT OF ISSUE	TOTAL QUANTITY	WEIGHT	CUBE
254	6515-343-8600	A	KNIFE, EAR, Myringotome, Straight, Sexton, 7 mm	Each 1.93	2		
						<u>44</u>	<u>2.6</u>
257	6515-664-5398	A	CHISEL, BONE, Double Bevel, Smith-Petersen, Straight, 1/2", 8" Long	Each 5.55	1		
257	6515-664-5399	A	CHISEL, BONE, Double Bevel, Smith-Petersen, Straight, 3/4", 8" Long	Each 5.78	1		
257	6515-320-3100	A	CLAMP, INTESTINAL ANASTOMOSIS, Rankin, 3 Blades	Each 17.51	2		
257	6515-375-4105	A	CLIP, SUTURE, Michel, 14 mm, 100s (For Forceps, Suture Clip, see 6515-332-5900)	Pkg .24	3		
257	6515-363-2300	A	CONDUCTOR, BONE CUTTING WIRE SAW, Bailey (For use with Saw, Bone Cutting, 6515-363-2700; for Handle see 6515-363-2400)	Each 1.21	2		
257	6515-323-1300	A	CURETTE, UTERINE, Blunt, Thomas, Irrigating, Medium, 10-1/2" Long	Each 3.15	1		
257	6515-323-0700	A	CURETTE, UTERINE, Blunt, Thomas, Size 4, 10-1/2" Long	Each 3.56	1		
257	6515-323-2300	A	CURETTE, UTERINE, Sharp, Sims, Size 4, 10-1/2" Long	Each 3.29	2		
257	6515-323-5380	A	CUTTER, BONE PIN, Steinmann, Pin and Wire, Compound Action, 18"	Each 30.90	1		
257	6515-324-5500	A	DEPRESSOR, TONGUE, WOOD, 100s	Box .17	36		
257	6515-325-6500	A	DILATOR, UTERINE, Goodell, 13-1/2"	Each 21.85	1		
257	6515-325-5500	A	DILATOR SET, UTERINE, Hank, Solid, Double-ended, Set of 6	Set 16.45	1		
						<u>48</u>	<u>2.6</u>
258	6515-324-5205	A	DEPRESSOR, TONGUE, METAL, Heart Shape, Fenestrated Blades, Weder, Small Size	Each 1.47	2		
258	6515-325-9400	A	DIRECTOR AND TONGUE TIE, Grooved, Olivary Point, 5-1/2"	Each 1.00	6		
258	6515-312-3500	A	DRILL, HAND, BONE, Smedberg	Each 19.78	2		
258	6515-310-9240	A	DRILL, TWIST, BONE, 1/8" Diameter, 3"	Each .49	2		
258	6515-310-9260	A	DRILL, TWIST, BONE, 5/32" Diameter, 3"	Each .52	2		
258	6515-310-9300	A	DRILL, WIRE, BONE, Bayonet Point, Kirschner, 9 x 0.045", 12s	Pkg 1.61	3		

SURGICAL SUPPLIES AND EQUIPMENT

CASE NO	FEDERAL STOCK NO.	STORAGE CODE	ITEM IDENTIFICATION	UNIT OF ISSUE	TOTAL QUANTITY	WEIGHT	CUBE
258	6515-310-9320	A	DRILL, WIRE, BONE, Bayonet Point, Kirschner, 9 x 0.062", 12s	Pkg 1.60	3		
258	6515-327-8400	A	ELEVATOR, PERIOSTEAL, Double-ended, Curved Blunt, Straight Blunt, Sayre, 6-1/2"	Each 1.71	3		
258	6515-330-2800	A	FILIFORM, URETHRAL, Olivary Tip, LeFort, Woven, 3 Fr (See Catheter, Urethral, 6515-317-0620 and 6515-317-0650)	Each 1.45	1		
258	6515-330-2920	A	FILIFORM, URETHRAL, Olivary Tip, LeFort, Woven, 6 Fr (See Catheter, Urethral, 6515-317-0620 and 6515-317-0650)	Each 1.45	1		
258	6515-331-1300	A	FORCEPS, BONE CUTTING, Curved, Liston-Stille, Compound Action, 10-1/4"	Each 25.38	2		
258	6515-331-2700	A	FORCEPS, BONE HOLDING, Straight, Kern, 8-1/2"	Each 10.38	4		
258	6515-333-3600	A	FORCEPS, DRESSING, Straight, Serrated Jaws, Round Tip, 5-1/2"	Each .58	36		
258	6515-333-3100	A	FORCEPS, DRESSING, Straight, Serrated Jaws, Round Tip, Cushing, 7"	Each 1.02	12		
258	6515-333-9700	A	FORCEPS, FIXATION, Spring Catch, Straight, Graefe, 4-1/2", 5 x 6 Teeth	Each 3.08	4		
258	6515-334-1400	A	FORCEPS, GALL DUCT, Curved, Lahey, 7-1/2"	Each 3.20	6		
258	6515-337-3900	A	FORCEPS, GAUZE PAD HOLDING, Straight, Foerster, 9-1/2"	Each 2.57	36		
258	6515-334-4900	A	FORCEPS, HEMOSTATIC, Curved, Halstead, Mosquito, 5"	Each 1.62	36		
258	6515-334-9500	A	FORCEPS, HEMOSTATIC, Curved, Pean, Hysterec-tomy Clamp, 9"	Each 3.47	10		
						<u>36</u>	<u>2.6</u>
259	6515-333-3700	A	FORCEPS, DRESSING, Straight, Serrated Jaws, Round Tip, 10"	Each 1.67	12		
259	6515-334-3800	A	FORCEPS, HEMOSTATIC, Curved, Kelly, 5-1/2"	Each 1.50	108		
259	6515-334-4300	A	FORCEPS, HEMOSTATIC, Curved, Rochester-Pean, 6-1/4"	Each 1.85	48		
259	6515-334-5600	A	FORCEPS, HEMOSTATIC, Straight, Halstead, Mosquito, 5"	Each 1.62	24		
259	6515-334-6800	A	FORCEPS, HEMOSTATIC, Straight, Kelly, 5-1/2"	Each 1.52	120		
						<u>45</u>	<u>2.6</u>

SURGICAL SUPPLIES AND EQUIPMENT

CASE NO.	FEDERAL STOCK NO.	STORAGE CODE	ITEM IDENTIFICATION	UNIT OF ISSUE	TOTAL QUANTITY	WEIGHT	CUBE
260	6515-660-0011	A	BLADE, SURGICAL KNIFE, DETACHABLE, Small Tang, Sterile, No. 10, 6s (For Handle see 6515-344-7800)	Pkg 36	170		
260	6505-117-0400	A	DUSTING POWDER, ABSORBABLE, USP, 5 lb (2.27 kg)	Can 2.15	9		
260	6515-339-7820	A	GLOVES, SURGEONS, Rubber, Mediumweight, Size 6-1/2	Pair .15	72		
260	6515-339-7880	A	GLOVES, SURGEONS, Rubber, Mediumweight, Size 8	Pair .18	156		
260	6515-339-7900	A	GLOVES, SURGEONS, Rubber, Mediumweight, Size 8-1/2	Pair .18	36		
260	6515-926-8954	A	TUBE, DRAINAGE, SURGICAL, Rubber, Penrose, Sterile, X-ray Opaque, 3/8", 12" Long, 12s	Box 1 00	12		
260	6515-926-8955	A	TUBE, DRAINAGE, SURGICAL, Rubber, Penrose, Sterile, X-ray Opaque, 5/8", 12" Long, 12s	Box 1.12	12		
260	6515-385-9880	A	TUBE, DUODENAL, SURGICAL, Rubber, Levin, Single Lumen, 16 Fr	Each .43	36		
260	6515-385-9400	A	TUBE, DUODENAL, SURGICAL, Rubber, Miller-Abbott, Double Lumen, with Balloon, 16 Fr	Each 2 95	3		
260	6515-386-5800	A	TUBE, STOMACH, SURGICAL, 30 Fr	Each 1.17	12		
260	6515-965-2511	A	WAX, BONE, Sterile, Melting Range 57.0 ^o -62.8 ^o C, 2-1/2 Gm, 12 packets	Pkg 1.90	1		
						109	7.0
261	6515-299-8679	A	CATHETER, URETHRAL, Balloon, Self-retaining, Double Eye, Nonsterile Rubber, Round Tip, with 5 ml Bag, 14 Fr	Each .99	12		
261	6515-317-7620	A	CATHETER, URETHRAL, Balloon, Self-retaining, Double Eye, Nonsterile Rubber, Round Tip, with 5 ml Bag, 20 Fr	Each .99	24		
261	6515-299-8681	A	CATHETER, URETHRAL, Balloon, Self-retaining, Double Eye, Nonsterile Rubber, Round Tip, with 5 ml Bag, 26 Fr	Each .99	12		
261	6515-317-4220	A	CATHETER, URETHRAL, Nonsterile Rubber, Double Eye, Hollow-pointed Tip, Robinson, 12 Fr	Each .17	12		
261	6515-317-4240	A	CATHETER, URETHRAL, Nonsterile Rubber, Double Eye, Hollow-pointed Tip, Robinson, 16 Fr	Each .15	12		
261	6515-317-4250	A	CATHETER, URETHRAL, Nonsterile Rubber, Double Eye, Hollow-pointed Tip, Robinson, 18 Fr	Each .15	12		
261	6515-317-4260	A	CATHETER, URETHRAL, Nonsterile Rubber, Double Eye, Hollow-pointed Tip, Robinson, 20 Fr	Each .16	12		
261	6515-317-4270	A	CATHETER, URETHRAL, Nonsterile Rubber, Double Eye, Hollow-pointed Tip, Robinson, 22 Fr	Each .17	12		

SURGICAL SUPPLIES AND EQUIPMENT

CASE NO.	FEDERAL STOCK NO.	STORAGE CODE	ITEM IDENTIFICATION	UNIT OF ISSUE	TOTAL QUANTITY	WEIGHT	CUBE
261	6515-317-4290	A	CATHETER, URETHRAL, Nonsterile Rubber, Double Eye, Hollow-pointed Tip, Robinson, 24 Fr	Each .18	12		
261	6515-781-3042	A	SUTURE, ABSORBABLE, SURGICAL, Nonboilable, Plain, Size 0, 18" Long, with Affixed Cutting Edge, Single Armed, Half Curved Needle, Sterile, in Individual Sealed Container, 12s	Pkg 2.36	6		
261	6515-616-9454	A	SUTURE, ABSORBABLE, SURGICAL, Nonboilable, Plain, Size 00, 54" Long, without Needle, Sterile, in Individual Sealed Container, 12s	Pkg 2.58	12		
261	6515-823-7841	A	SUTURE, ABSORBABLE, SURGICAL (Ophthalmic), Nonboilable, Treated, Size 6-0, 18" Long, with Affixed Reverse Cutting Edge, Nontraumatic, Double Armed, Fine Point, 3/8 Circle, 10.4 mm Needle, Sterile, in Individual Sealed Container, 12s	Pkg 17.50	1		
261	6515-781-3040	A	SUTURE, ABSORBABLE, SURGICAL, Nonboilable, Treated, Size 0, 18" Long, with Affixed Cutting Edge, Single Armed, Half Curved Needle, Sterile, in Individual Sealed Container, 12s	Pkg 2.37	6		
261	6515-378-7100	A	SUTURE, ABSORBABLE, SURGICAL, Nonboilable, Treated, Size 00, 27" Long, with Affixed Taper Point, Nontraumatic, Single Armed, Straight, 1-3/4" Needle, Sterile, in Individual Sealed Container, 12s	Pkg 2.40	12		
261	6515-781-3041	A	SUTURE, ABSORBABLE, SURGICAL, Nonboilable, Treated, Size 0, 27" Long, with Affixed Taper Point, Single Armed, 1/2 Circle Needle, Sterile, in Individual Sealed Container, 12s	Pkg 2.19	6		
261	6515-616-9449	A	SUTURE, ABSORBABLE, SURGICAL, Nonboilable, Treated, Size 0, 54" Long, without Needle, Sterile, in Individual Sealed Container, 12s	Pkg 2.60	6		
261	6515-378-6340	A	SUTURE, ABSORBABLE, SURGICAL, Nonboilable, Treated, Size 1, 60" Long, without Needle, Sterile, in Individual Sealed Container, 12s	Pkg 2.23	10		
261	6515-375-5530	A	SUTURE, NONABSORBABLE, SURGICAL, Cotton, White, Twisted, Capillary, Uncoated, Size 0, without Needle, 100 yd	Spool .13	6		
261	6515-375-5540	A	SUTURE, NONABSORBABLE, SURGICAL, Cotton, White, Twisted, Capillary, Uncoated, Size 1, without Needle, 100 yd	Spool .18	6		
261	6515-375-5240	A	SUTURE, NONABSORBABLE, SURGICAL, CRS, No. 28 Stubs Wire Gage, 0.014" Diameter, USP Size 0, Noncapillary, without Needle, 1 oz	Spool .50	3		
261	6515-375-5320	A	SUTURE, NONABSORBABLE, SURGICAL, CRS, No. 22 Stubs Wire Gage, 0.028" Diameter, USP Size 5, Noncapillary, without Needle, 4 oz	Coil .98	6		

SURGICAL SUPPLIES AND EQUIPMENT

CASE NO.	FEDERAL STOCK NO.	STORAGE CODE	ITEM IDENTIFICATION	UNIT OF ISSUE	TOTAL QUANTITY	WEIGHT	CUBE
261	6515-823-7840	A	SUTURE, NONABSORBABLE, SURGICAL (Ophthalmic), Silk, Black, Braided, Noncapillary, Size 6-0, 18" Long, with Affixed Reverse Cutting Edge, Nontraumatic, Double Armed, Fine Point, 3/8 Circle, 10.4 mm Needle, Sterile, in Individual Sealed Container, 12s	Pkg 8.50	1		
261	6515-963-5352	A	SUTURE, NONABSORBABLE, SURGICAL, Silk, Black, Braided, Noncapillary, Size 5-0, 18" Long, with Affixed Taper Point, Nontraumatic, Single Armed, 1/2 Circle, 13/16" Needle, Sterile, in Individual Sealed Container, 12s	Pkg 1.80	6		
						29	2.6
262	6515-339-7840	A	GLOVES, SURGEONS, Rubber, Mediumweight, Size 7	Pair .18	72		
262	6515-339-7860	A	GLOVES, SURGEONS, Rubber, Mediumweight, Size 7-1/2	Pair .18	360		
						50	4.7
263	6515-346-5900	A	MAGNIFIER, Binocular, Spectacle Design, Beebe, Metal Frame	Each 4.90	2		
263	6515-346-8400	A	MALLEY, BONE SURGERY, Kirk, Metal	Each 3.74	2		
263	6515-346-9200	A	MANOMETER, SPINAL FLUID, Water Type, Complete	Each 7.31	6		
263	6515-347-5200	A	MIRROR, HEADBAND, 3-1/2" Diameter, 1/2" Opening (For Headband see 6515-340-7900)	Each 1.35	4		
263	6515-347-8500	A	MIRROR, Laryngeal, Handle, 8-1/2" Long, 5/8" Diameter, Size 1	Each .77	2		
263	6515-582-3760	A	NEEDLE, HYPODERMIC, Luer Lock, Short Bevel, 20 Gage, 1-1/2", 12s	Box .45	12		
263	6515-348-7350	A	NEEDLE, HYPODERMIC, Aspirating-Pneumothorax, Luer Lock, Regular Bevel, with Stylet, 13 Gage, 3-1/2", 12s	Box 4.50	1		
263	6515-349-3400	A	NEEDLE, HYPODERMIC, General Purpose, Luer Lock, Regular Bevel, with Stylet, 20 Gage, 1-1/2", 12s	Box .58	36		
263	6515-349-4400	A	NEEDLE, HYPODERMIC, General Purpose, Luer Lock, Regular Bevel, with Stylet, 22 Gage, 1", 12s	Box .60	6		
263	6515-349-5400	A	NEEDLE, HYPODERMIC, General Purpose, Luer Lock, Regular Bevel, with Stylet, 23 Gage, 3/4", 12s	Box .53	36		
263	6515-349-5900	A	NEEDLE, HYPODERMIC, General Purpose, Luer Lock, Regular Bevel, with Stylet, 25 Gage, 1/4", 12s	Box .48	1		

SURGICAL SUPPLIES AND EQUIPMENT

CASE NO.	FEDERAL STOCK NO.	STORAGE CODE	ITEM IDENTIFICATION	UNIT OF ISSUE	TOTAL QUANTITY	WEIGHT	CUBE
263	6515-299-9636	A	NEEDLE, HYPODERMIC, Luer Lock, Short Bevel, 20 Gage, 3", 12s	Box 1.15	12		
263	6515-350-5800	A	NEEDLE, HYPODERMIC, Spinal Puncture, Luer Lock, Short Bevel, with Fitted Stylet, 20 Gage, 3-1/2" (Replacement Needle for Manometer, 6515-346-9200)	Each 39	12		
263	6515-350-5900	A	NEEDLE, HYPODERMIC, Spinal Puncture, Luer Lock, Short Bevel, with Fitted Stylet, 22 Gage, 3-1/2"	Each .41	12		
263	6515-059-3425	A	NEEDLE, HYPODERMIC, Spinal Puncture, Luer Lock, Short Bevel, with Fitted Stylet, 24 Gage, 3-1/2"	Each .52	6		
263	6515-350-9100	A	NEEDLE, SUTURE, ABDOMINAL, Ferguson, 1/2 Circle, Taper Point, Size 12, 6s	Pkg .25	6		
263	6515-350-9680	A	NEEDLE, SUTURE, ABDOMINAL, Keith, Straight, Triangular Point, 2-7/8", 6s	Pkg .36	12		
263	6515-351-1200	A	NEEDLE, SUTURE, CATGUT, Mayo, 1/2 Circle, Taper Point, Size 1, 6s	Pkg .26	12		
263	6515-351-1280	A	NEEDLE, SUTURE, CATGUT, Mayo, 1/2 Circle, Taper Point, Size 3, 6s	Pkg .24	12		
263	6515-351-2740	A	NEEDLE, SUTURE, EYE, 1/2 Circle, Cutting Edge, Size 2, 6s	Pkg .44	1		
263	6515-351-8220	A	NEEDLE, SUTURE, INTESTINAL, Fine, 1/2 Circle, Taper Point, Size 4, 6s	Pkg .26	6		
263	6515-351-9200	A	NEEDLE, SUTURE, INTESTINAL, Mayo, Fine, Straight, Taper Point, 2", 6s	Pkg .28	3		
263	6515-351-9660	A	NEEDLE, SUTURE, INTESTINAL, Murphy, Regular Eye, 1/2 Circle, Taper Point, Size 4, 6s	Pkg .25	6		
263	6515-352-0800	A	NEEDLE, SUTURE, KIDNEY, Regular Eye, Straight, Blunt Point, 6s	Pkg .25	2		
263	6515-352-3400	A	NEEDLE, SUTURE, SKIN, King Needle, 3/8 Circle, Cutting Edge, 3-1/2", 6s	Pkg .43	4		
263	6515-352-5700	A	NEEDLE, SUTURE, SURGEONS, French, 1/2 Circle, Taper Point, Size 2, 6s	Pkg .57	4		
263	6515-352-5140	A	NEEDLE, SUTURE, SURGEONS, Regular, 1/2 Circle, Cutting Edge, Size 5, 6s	Pkg .34	4		
263	6515-352-4440	A	NEEDLE, SUTURE, SURGEONS, Regular, 3/8 Circle, Cutting Edge, Size 6, 6s	Pkg .41	4		
263	6515-352-4540	A	NEEDLE, SUTURE, SURGEONS, Regular, 3/8 Circle, Cutting Edge, Size 16, 6s	Pkg .31	4		
263	6515-352-6520	A	NEEDLE, SUTURE, UTERINE, Martin, 1/2 Circle, Cutting Edge, Size 7, 6s	Pkg .37	2		
263	6515-612-0000	A	PENCIL, Skin Marking, Double-ended, Red and Blue, Ointment Base	Each .45	12		

SURGICAL SUPPLIES AND EQUIPMENT

CASE NO.	FEDERAL STOCK NO.	STORAGE CODE	ITEM IDENTIFICATION	UNIT OF ISSUE	TOTAL QUANTITY	WEIGHT	CUBE
263	6515-310-7900	A	PIN, BONE, TROCAR POINT, Steinmann, 5" Triangular Shank, 1/8" Diameter	Each 48	24		
263	6515-310-7940	A	PIN, BONE, TROCAR POINT, Steinmann, 8" Triangular Shank, 5/32" Diameter	Each .53	24		
						<u>35</u>	<u>2.6</u>
264	6515-781-3686	A	OTOSCOPE AND OPHTHALMOSCOPE SET, Electric Combination Battery and Transformer Type: Includes D-size Battery Handle (without Batteries), Small Handle with Cord (For Attachment to Battery Handle and Transformer), and 2.5V Transformer (For Batteries see 6135-542-6216, Section XI)	Each 35.50	6		
264	6515-356-9300	A	PROBE, GENERAL OPERATING, Straight, 8"	Each .59	12		
264	6515-754-0425	A	RAZOR, SURGICAL PREPARATION, Straight Type, Large (For Blade see 6515-754-0426)	Each 2.24	6		
264	6515-360-4910	A	RETRACTOR, ABDOMINAL, Balfour, Self-retaining, 6 Blades	Each 38.88	3		
						<u>44</u>	<u>2.6</u>
265	6515-360-3490	A	RETRACTOR, ABDOMINAL, Deaver, 12" Long, 1" Wide	Each 2.63	6		
265	6515-360-3530	A	RETRACTOR, ABDOMINAL, Deaver, 12" Long, 2" Wide	Each 2.81	6		
265	6515-361-0450	A	RETRACTOR, GENERAL OPERATING, Volkman, 4 Sharp Prongs	Each 2.36	8		
265	6515-360-6600 (6515-926-9193)	A	RETRACTOR, MASTOID, Pivot-joint Handle, Weitlaner, Self-retaining, 3 - vs - 4 Prongs	Each 9.74	3		
265	6515-361-7250	A	RETRACTOR, RIB, Finocchietto, Self-retaining, Fenestrated Blade	Each 41.32	2		
265	6515-360-3850	A	RETRACTOR SET, ABDOMINAL, Double-ended, Richardson-Eastman, Set of 2	Set 4 04	6		
265	6515-360-8800	A	RETRACTOR SET, GENERAL OPERATING, Flexible (One 1-1/2 x 13" and One 2 x 13")	Set 2.07	3		
265	6515-360-9200	A	RETRACTOR SET, GENERAL OPERATING, Rigid, Double-ended (One 8-1/2" and One 8-3/4")	Set 1.26	4		
						<u>32</u>	<u>2.6</u>
266	6515-331-4800	A	RONGEUR, CRANIAL, CURVED, Bone Forceps, Compound Action, Stille, 9"	Each 22.93	3		
266	6515-363-1100	A	SAW, AMPUTATING, Satterlee, 8" Detachable Blade	Each 4.90	3		

SURGICAL SUPPLIES AND EQUIPMENT

CASE NO.	FEDERAL STOCK NO.	STORAGE CODE	ITEM IDENTIFICATION	UNIT OF ISSUE	TOTAL QUANTITY	WEIGHT	CUBE
266	6515-363-2700	A	SAW, BONE CUTTING, Single Wire, Spiral Teeth, without Handle, 20" (For Handle see 6515-363-2400, Also see Conductor, 6515-363-2300)	Each 1.37	24		
266	6515-363-7200	A	SAW, PLASTER CAST, Engel	Each 3.13	3		
266	6515-363-8840	A	SCISSORS, BANDAGE, Angular, Lister, One Point Sharp, One Point Blunt, 7-1/4"	Each 1.74	24		
266	6515-364-0500	A	SCISSORS, GENERAL SURGICAL, Curved, Mayo, Both Points Blunt, Dissecting, 5-1/2"	Each 1.56	24		
266	6515-364-0560	A	SCISSORS, GENERAL SURGICAL, Curved, Mayo, Both Points Blunt, Dissecting, 9"	Each 4.75	3		
266	6515-365-1820	A	SCISSORS, GENERAL SURGICAL, Straight, One Point Sharp, 5-1/2"	Each 1.65	48		
266	6515-364-0900	A	SCISSORS, GENERAL SURGICAL, Straight, Mayo, Both Points Blunt, Dissecting, 5-1/2"	Each 1.47	24		
266	6515-781-3039	A	SCISSORS, GENERAL SURGICAL, Straight, Mayo, 9"	Each 4.45	3		
266	6515-365-6200	A	SCISSORS, TENOTOMY, Curved, Stevens, Both Points Blunt, 3/8" Cut, 4-1/4"	Each 2.35	2		
266	6515-365-7100	A	SCISSORS, TONSIL, Curved, Matzenbaum, Both Points Blunt, 1-1/2" Cut, 7"	Each 2.25	6		
266	6515-366-8200	A	SHEARS, PLASTER CAST CUTTING, Hand, Stille, 15"	Each 30.14	2		
266	6515-781-3685	A	SIGMOIDOSCOPE, Electric, Combination Battery-Transformer Type, Distal and Proximal Lighting, Pneumatic, 63 Fr: Includes D-size Battery Handle (without Batteries), 2.5V Transformer and Connecting Cord. (For Batteries see 6135-542-6216, Section XI)	Each 33.75	1		
266	6515-368-2200	A	SOUND, UTERINE, Simpson	Each 1.65	1		
						49	2.6
267	6515-370-5620	A	SPECULUM, VAGINAL, Pivoted Blades, Self-retaining, Graves, 4" Blade, 1-5/16" Wide	Each 2.67	3		
267	6515-371-9600	A	SPLINT, ARM, Plastic, for Whole Arm, Adult	Each 2.16	18		
267	6515-373-7800	A	SPREADER, PLASTER CAST, Hennig, 2" Wide Blades	Each 9.97	1		
267	6515-374-2220	A	STETHOSCOPE, Bell-Diaphragm Type, Combination Type	Each 2.63	18		
						38	4.7
268	6515-371-3100	A	SPHYGMOMANOMETER, Nonconductive, Aneroid, Complete, in Case	Each 12.55	12		

SURGICAL SUPPLIES AND EQUIPMENT

CASE NO.	FEDERAL STOCK NO	STORAGE CODE	ITEM IDENTIFICATION	UNIT OF ISSUE	TOTAL QUANTITY	WEIGHT	CUBE
268	6515-372-2150	A	SPLINT, HAND, Whole Hand, Mason-Allen, Aluminum	Each .55	48		
268	5345-260-0758	A	STONE, SHARPENING, Artificial, Coarse-fine Grit, Rectangular, Mounted, 1 x 2 x 7"	Each 1.05	3		
268	6515-375-1100	A	STYLET, CATHETER, Malleable, Straight	Each .74	6		
						51	2.6
269	6515-660-0046	A	AIRWAY, PHARYNGEAL, Plastic, Adult-Child (For Mouth to Mouth Resuscitation)	Each .20	12		
269	6515-302-6020	A	ANOSCOPE, CYLINDRICAL, with Obturator, Hirschman, Medium	Each 6.18	6		
269	6515-302-6040	A	ANOSCOPE, CYLINDRICAL, with Obturator, Hirschman, Small	Each 5.20	3		
269	6515-303-8250	A	APPLICATOR, DISPOSABLE, Wood, Cotton Tipped End, Sterile, 1/12 x 6", 100s	Pkg .10	6		
269	6515-754-0426	A	BLADE, SURGICAL PREPARATION RAZOR, Straight, Single Edged, 5s (For Razor see 6515-154-0425)	Pkg .19	52		
269	6515-312-4100	A	BRACE, BIT, BONE, Cranial, Cushing	Each 9.73	2		
269	6515-879-1622	A	BULB, RUBBER, for Cleaning Needles	Each .63	1		
269	6515-515-2114	A	BUR, CRANIAL, Enlarging Type, Flame Shape, Hudson, 9 mm	Each 4.18	3		
269	6515-515-2115	A	BUR, CRANIAL, Enlarging Type, Ball Shape, Hudson, 16 mm	Each 3.40	4		
269	6515-317-0620	A	CATHETER, URETHRAL, Nonsterile Metal, Double Eye, Screw Tip, Lee Fort, 14 Fr (For use with Filiform, Urethral, 6515-330-2800 and 6515-330-2920)	Each 3.24	1		
269	6515-317-0650	A	CATHETER, URETHRAL, Nonsterile Metal, Double Eye, Screw Tip, Lee Fort, 20 Fr (For use with Filiform Urethral, 6515-330-2800 and 6515-330-2920)	Each 3.24	1		
269	3590-170-8462	A	CLIPPER, HAIR, SURGICAL, 1 mm Cut	Each 1.94	2		
269	6515-890-1682	A	CLAMP, ARTERY, Bulldog, Glover, Curved Jaws, with Adjusting Screw, 6.5 cm	Each 17.50	1		
269	6515-690-3216	A	CLAMP, ARTERY, Bulldog, Glover, Curved Jaws, with Adjusting Screw, 9 cm, 4 cm Jaw	Each 21.00	1		
269	6515-890-1681	A	CLAMP, ARTERY, Bulldog, Glover, Straight Jaws, with Adjusting Screw, 6.5 cm	Each 17.80	1		

SURGICAL SUPPLIES AND EQUIPMENT

CASE NO.	FEDERAL STOCK NO.	STORAGE CODE	ITEM IDENTIFICATION	UNIT OF ISSUE	TOTAL QUANTITY	WEIGHT	CUBE
269	6515-690-3215	A	CLAMP, ARTERY, Bulldog, Glover, Straight Jaws, with Adjusting Screw, 9 cm, 4 cm Jaw	Each 20.00	1		
269	6515-690-3213	A	CLAMP, ARTERY, DeBakey, Angular Jaws, with Finger Rings, Ratch and Pawl, 7"	Each 23 50	1		
269	6515-341-9200	A	HOLDER, SUTURE NEEDLE, Central Oval Grooved Jaws, Hegar-Mayo, 7"	Each 1.92	24		
269	6515-351-1300	A	NEEDLE, SUTURE, CATGUT, Mayo, 1/2 Circle, Taper Point, Size 4, 6s	Pkg .24	12		
269	6515-351-1240	A	NEEDLE, SUTURE, CATGUT, Mayo, 1/2 Circle, Taper Point, Size 2, 6s	Pkg .26	12		
269	6515-363-8400	A	SCISSORS, BANDAGE, Angular, Heavy, Field Type, 8"	Each 8 00	6		
269	6515-372-5500	A	SPLINT SUPPORT AND FOOTREST, Leg (For use with Splint, Leg, 6515-372-5300)	Each .41	18		
269	6515-514-2395	A	SYRINGE, LUER, General Purpose, Small Tip, Borosilicate Glass, Graduated at 1 minim and 1/10 ml Intervals, 2 ml	Each .34	276		
269	6515-380-4100	A	SYRINGE, LUER, General Purpose, Small Tip, Borosilicate Glass. Graduated at 1/5 ml Intervals, 10 ml	Each .73	36		
269	6515-584-2805	A	SYRINGE, LUER, Needle Lock, Borosilicate Glass, Graduated at 1/5 ml Intervals, 10 ml	Each .74	6		
269	6515-282-9600	A	SYRINGE, LUER, Tuberculin, Borosilicate Glass, Graduated at 1/2 minim and 1/100 ml Intervals, 1 ml	Each .69	24		
269	6515-890-1375	A	TRACTOR, BONE PIN AND WIRE, U-shaped, Salvatore, Nylon, Disposable, Medium, 5"	Each 4.56	9		
269	6515-890-1376	A	TRACTOR, BONE PIN AND WIRE, U-shaped, Salvatore, Nylon, Disposable, Large, 6-1/2"	Each 5.01	9		
						99	4.7
270	6515-307-0090	A	ATOMIZER, MEDICINAL, Clear Glass, Metal Nozzle, with Nasal Guard and Rubber Bulb and Tubing, 1 oz	Each .90	3		
270	6515-386-9540	A	CANNULA, TRACHEOTOMY, Metal, Silver Cannula and Silver-plated Obturator, Jackson, Size 3	Each 3.04	12		
270	6515-386-9580	A	CANNULA, TRACHEOTOMY, Metal, Silver Cannula and Silver-plated Obturator, Jackson, Size 4	Each 3.31	12		
270	6515-386-9620	A	CANNULA, TRACHEOTOMY, Metal, Silver Cannula and Silver-plated Obturator, Jackson, Size 5	Each 3.27	12		

SURGICAL SUPPLIES AND EQUIPMENT

CASE NO.	FEDERAL STOCK NO.	STORAGE CODE	ITEM IDENTIFICATION	UNIT OF ISSUE	TOTAL QUANTITY	WEIGHT	CUBE
270	6515-386-9660	A	CANNULA, TRACHEOTOMY, Metal, Silver Cannula and Silver-plated Obturator, Jackson, Size 6	Each 3.66	12		
270	6515-386-9700	A	CANNULA, TRACHEOTOMY, Metal, Silver Cannula and Silver-plated Obturator, Jackson, Size 7	Each 4.07	12		
270	6515-342-4700	A	INHALER, ANESTHESIA, Metal, Wire Mesh, Yankauer	Each 1.63	6		
270	6515-379-2100	A	LIGATURE, UMBILICAL, 1/8" Wide, 18" Long, Sterile, in Individual Sealed Container, 12s	Pkg 1.04	6		
270	6515-781-3038	A	LIGHT, HEAD, DIAGNOSTIC, Combination Battery and 2.5V Transformer Type, without Batteries (For Batteries see 6135-542-6216, Section XI)	Each 17.51	4		
						44	4.7
271	6515-380-4500	A	SYRINGE, LUER, General Purpose, Large Tip, Borosilicate Glass, with Metal Needle Adapter, Graduated at 1 ml Intervals, 30 ml	Each 1.38	18		
271	6515-380-4300	A	SYRINGE, LUER, General Purpose, Small Tip, Borosilicate Glass, Graduated at 1 ml Intervals, 20 ml	Each .87	24		
271	6515-380-2110	A	SYRINGE, LUER, Insulin, 40-80 Units, Glass, 1 ml	Each .37	30		
271	6515-584-2822	A	SYRINGE, LUER, Needle Lock, Glass, Graduated at 1/10 ml Intervals, without Finger Rings, 2 ml	Each .48	24		
271	6515-380-5800	A	SYRINGE, LUER, Needle Lock, Borosilicate Glass, Graduated at 1/5 ml Intervals, without Finger Rings, 5 ml	Each .57	120		
						40	2.6
273	6515-373-2100	A	SPLINT, WIRE, LADDER, 3-1/2 x 31"	Each .23	24		
273	6515-385-3100	A	TUBE, COLON, SURGICAL, 30 Fr	Each .41	36		
						41	3.4
274/276	6515-000-0222	A	ANESTHESIA APPARATUS, GAS, Nitrous Oxide, Oxygen and Ether, Mobile, 4 Cylinder Capacity, Complete with the Following Components for Three Anesthesia Apparatus: 6515-000-0212 Adapter, Catheter, 90° Elbow, 15 mm, Slip Joint 6515-300-2900 Airway, Pharyngeal, Guedel, Rubber, Large, Adult	Each 673.01	3	483	39.0

SURGICAL SUPPLIES AND EQUIPMENT

CASE NO.	FEDERAL STOCK NO.	STORAGE CODE	ITEM IDENTIFICATION	UNIT OF ISSUE	TOTAL QUANTITY	WEIGHT	CUBE
			6515-000-0202 Airway, Plastic, Medium	Each	36		
			6515-000-0101 Airway, Plastic Small	Each	24		
			6515-000-0295 Catheter, Aspirating, 10 Fr	Each	6		
			6515-000-0294 Catheter, Aspirating, 12 Fr	Each	12		
			6515-000-0293 Catheter, Aspirating, 14 Fr	Each	12		
			6515-000-0290 Catheter, Endotracheal, Oral, 16 Fr	Each	3		
			6515-000-0288 Catheter, Endotracheal, Oral, 18 Fr	Each	3		
			6515-000-0286 Catheter, Endotracheal, Oral, 20 Fr	Each	3		
			6515-000-0284 Catheter, Endotracheal, Oral, 24 Fr	Each	3		
			6515-000-0282 Catheter, Endotracheal, Oral, 26 Fr	Each	3		
			6515-000-0280 Catheter, Endotracheal, Oral, 30 Fr	Each	9		
			6515-000-0298 Catheter, Murphy, Nasal, w/Cuff, 24 Fr	Each	3		
			6515-000-0297 Catheter, Murphy, Nasal, w/Cuff, 28 Fr	Each	3		
			6515-000-0296 Catheter, Murphy, Nasal, w/Cuff, 30 Fr	Each	3		
			6515-000-0220 Connector, Straight, 5 x 15 mm (For Endotracheal Tubes 16-18 Fr)	Each	3		
			6515-000-0218 Connector, Straight, 6 x 15 mm (For Endotracheal Tubes 20-22 Fr)	Each	3		
			6515-000-0216 Connector, Straight, 7 x 15 mm (For Endotracheal Tubes 24-26 Fr)	Each	3		
			6515-000-0214 Connector, Straight, 8 x 15 mm (For Endotracheal Tubes 30 Fr)	Each	3		
			6515-000-0210 Connector, Straight, 10 x 15 mm (For Endotracheal Tubes, 6515-299-8542)	Each	3		
			6515-000-0234 Connector, Y, Aluminum Inhsler	Each	3		
			6515-000-0291 Cuff, Catheter, without Pilot Balloon, 3/8" (30 Fr)	Each	9		
			6515-000-0292 Cuff, Catheter, without Pilot Balloon, 7/16" (34 Fr)	Each	9		
			6515-332-3300 Forceps, Endotracheal, Catheter, Magill	Each	3		
			6515-000-0259 Laryngoscope, Infant-Child-Adult, MacIntosh Type	Each	3		
			6515-299-8542 Tube, Endotracheal, Neoprene Compound, Magill, 8.5 mm, ID, 33 cm Long	Each	9		
277/286	6515-326-8875	A	DRAINAGE AND SUCTION APPARATUS, SURGICAL, Wangenstein-Phelan Type, with Tank Pump (Hand), Portable (For Bottle see 6530-326-8880, Section II)	Each 23.78	10	490	53.0
287	6515-079-4288	A	INHALATOR, Single, Complete with Oronasal Mask, Rebreathing Bag, Pressure Reducing Regulator with Flowmeter, and Nasal Catheter (For Oxygen, Size M Cylinder, see 6505-132-5225, Section I)	Each 33.00	4	25	1.6
288	6515-372-5300	A	SPLINT, LEC, Whole, Thomas, Half Ring, Carbon Steel (For Attachments see 6515-372-5500 and 6515-372-5485)	Each 2.69	18	122	8.8

SURGICAL SUPPLIES AND EQUIPMENT

CASE NO.	FEDERAL STOCK NO.	STORAGE CODE	ITEM IDENTIFICATION	UNIT OF ISSUE	TOTAL QUANTITY	WEIGHT	CUBE
289	6515-372-5485	A	SPLINT ATTACHMENT, Leg, Pearson (For use with Splint, Leg, 6515-372-5300)	Each 1 63	18	34	1.4
290/295	6515-299-8337	A	SUCTION AND PRESSURE APPARATUS, Surgical, Explosion-Proof, Portable, Field, 110V, 60 Cycle, AC	Each 110.30	6	276	12 0
296	6515-379-6820	A	SYRINGE, GLASS, BULB, Rubber, with Removable Tip, 4 oz	Each .98	48	39	4.7

SECTION IV

Surgical Dressings and Textile Products

CASE NO.	FEDERAL STOCK NO.	STORAGE CODE	ITEM IDENTIFICATION	UNIT OF ISSUE	TOTAL QUANTITY	WEIGHT	CUBE
299	6510-597-7469	A	BANDAGE, ADHESIVE, 3/4 x 3" (Band Aid), 100s	Box .34	12		
299	6510-371-8800	A	BANDAGE, COTTON, PLASTER OF PARIS IMPREGNATED, Hard Coated, Fast Setting, Arm Splint, Field Type, 4 x 15', 50s	Box .97	12		
299	6510-372-8100	A	BANDAGE, COTTON, PLASTER OF PARIS IMPREGNATED, Hard Coated, Fast Setting, Leg Splint, Field Type, 5 x 30", 50s	Box 2.00	6		
299	6510-201-1755	A	BANDAGE, MUSLIN, Compressed, Camouflaged, Triangular, with two Safety Pins, 37 x 37 x 52'	Each .16	144		
299	6532-299-9613	A	CAP, OPERATING, SURGICAL, Green, Large	Each .18	72		
						102	4.7
301	6510-200-4000	A	BANDAGE, GAUZE, Roller, Sterile, 2" x 6 yd, 12s	Pkg .65	36		
301	6530-715-9300	A	DRAPE, SURGICAL, General Surgery, Cotton, Double Thickness, Unbleached, 24 x 24"	Each .63	72		
301	6510-204-2000	A	WADDING, COTTON, SURGICAL, for Padding under Plaster Casts, Sheet, 5' x 6 yd, 12s	Pkg .95	4		
301	6530-719-0035	A	WRAPPER, STERILIZATION, Cotton, Double Thickness, Unbleached, 18" Square	Each .37	144		
						93	7.0
302	6510-200-5000	A	BANDAGE, GAUZE, Roller, Sterile, 3" x 10 yd, 12s	Pkg 1.29	12		
302	6510-202-2000	A	GAUZE, ABSORBENT, Nonsterile, 36' x 25 yd, Folded to 9" Wide	Pkg 1.18	24		
302	6510-203-9000	A	STOCKINET, SURGICAL, Natural Color, 3" x 25 yd	Roll 1.55	2		
						59	4.7
303	5340-312-6520	A	BUCKLE, Webbing, Textile, Splint, Three Prongs with Guard, 1-1/2", 144s (For Webbing see 8305-389-2300)	Pkg 3.41	1		
303	8305-222-2424	A	CLOTH, COTTON, CRASH, Toweling, Bleached White, 17" Wide, 50 yd	Bolt 8.00	1		
303	6510-204-0000	A	STOCKINET, SURGICAL, Natural Color, 6" x 25 yd	Roll 3.04	4		
303	6510-204-1000	A	STOCKINET, SURGICAL, Natural Color, 10" x 25 yd	Roll 4.79	2		
303	8305-389-2300	A	WEBBING, TEXTILE, SPLINT, Unbleached, Non-elastic, 1-1/2" (For Buckle see 5340-312-6520)	Yard .08	144		
						62	4.7

SURGICAL DRESSINGS AND TEXTILE PRODUCTS

CASE NO.	FEDERAL STOCK NO.	STORAGE CODE	ITEM IDENTIFICATION	UNIT OF ISSUE	TOTAL QUANTITY	WEIGHT	CUBE
304	6510-201-7435	A	DRESSING, FIRST AID, Field, Sterile Camouflaged, 4 x 7"	Each .14	96		
304	6510-201-7430	A	DRESSING, FIRST AID, Field, Sterile, Camouflaged, with 1/4 Safety Pins, 7-1/2 x 8"	Each .27	96		
						<u>40</u>	<u>2.6</u>
305	6532-299-9597	A	MASK, SURGICAL, Gauze, Nonsterile, with Fabric Filter, Green, 120s	Pkg 11.87	7		
305	6510-203-8490	A	SPONGE, SURGICAL, Nonsterile, Radiopaque, 12 Fly 4 x 8", 100s	Pkg 1.50	20		
						<u>69</u>	<u>7.0</u>
306	6510-202-8000	A	PACK, GAUZE, ABDOMINAL, Nonsterile, Radiopaque, 4 x 18", 100s	Pkg 7.29	2		
306	6510-299-8341	A	PAD, COTTON, Gauze Covered, Sterile, Eye Pad, 2-1/2 x 2-1/8", 50s	Pkg 1.56	6		
306	6510-203-8448	A	SPONGE, SURGICAL, Nonsterile, 8 Fly, 4 x 4", 200s	Pkg .97	55		
						<u>58</u>	<u>7.0</u>
307/308	6510-202-3000	A	GAUZE, ABSORBENT, Nonsterile, 36' x 100 yd, Folded to 18" Wide	Bolt 4.17	24	130	18.4
317	6510-200-5000	A	BANDAGE, GAUZE, Roller, Sterile, 3" x 10 yd, 12s	Pkg 1.29	48	86	5.8
318/319	6510-200-6000	A	BANDAGE, GAUZE, Roller, Sterile, 4' x 10 yd, 12s	Pkg 1.63	48	112	7.4
320/339	7210-000-0011	A	BLANKET, BED, Wool, 66 x 92"	Each 5.15	400	1760	210.0
341/343	6510-201-2890	A	COMPRESS AND BANDAGE, Field, Sterile, Camouflaged, in Waterproof Package, for Burns and Multiple Type Injuries, 18 x 22" Compress	Each 1.14	72	102	14.1
347/349	6510-201-2900	A	COMPRESS AND BANDAGE, Field, Sterile, Camouflaged, in Waterproof Package, for Burns and Multiple Type Injuries, 22 x 36" Compress	Each 1.62	36	96	14.1
353	6532-286-8364	A	DIAPER, L-PANTS, Cotton, Birdseye, 30 x 27"	Each .24	144	30	2.6
354	6530-715-9310	A	DRAPE, SURGICAL, General Surgery, Cotton, Double Thickness, Unbleached, 34 x 56"	Each 1.98	90	134	7.0
355/357	6530-715-9040	A	DRAPE, SURGICAL, Abdominal Surgery, Cotton, Double Thickness, Unbleached, 72 x 94"	Each 5.72	48	195	10.8
358	8205-222-2359	A	Wool GREGE, Wool, Gray, for Padding Orthopedic Appliances, 1/2 x 36"	Yard 1.82	10	42	5.4
359/361	6532-716-0010	A	GOWN, OPERATING, SURGICAL, White, Medium	Each 2.30	180	405	41.1
362/365	6532-000-0202	A	GOW, PAPPEL, No Back, Reversible, Large	Each 1.43	400	344	12.8

SURGICAL DRESSINGS AND TEXTILE PRODUCTS

CASE NO.	FEDERAL STOCK NO.	STORAGE CODE	ITEM IDENTIFICATION	UNIT OF ISSUE	TOTAL QUANTITY	WEIGHT	CUBE
366	6510-203-2250	A	PAD, ABDOMINAL, Nonsterile, 8 x 10", 50s	Pkg 1.33	10	34	6.0
367	6510-559-6130	A	PAD, SANITARY, Heavy, Super Size, 12s	Pkg .24	48	42	6.3
368/391	7210-042-9205	A	PILLOW, BED, Cotton Ticking, Polyester Filling, 21 x 27"	Each 2.50	240	1008	321.6
392/393	7210-205-3101	A	PILLOWCASE, Cotton, Bleached, 22-1/4 x 32-1/2"	Each .52	480	196	7.6
394/401	7210-171-1096	A	SHEET, BED, Cotton, Bleached, 72 x 106"	Each 1.86	400	896	32.8
402/404	7210-128-8929	A	TOWEL, BATH, Turkish, White, 20 x 40"	Each .52	288	255	23.4
405/406	7210-205-3087	A	TOWEL, HAND, Cotton, Huck, Plain, White, 17 x 36"	Each .30	360	126	6.0
407	6530-719-0045	A	WRAPPER, STERILIZATION, Cotton, Double Thickness, Unbleached, 36" Square	Each 1.16	144	111	4.9
408	6510-200-2400	A	BANDAGE, COTTON, ELASTIC, Rolled, with Fastening Clips, 4" x 5-1/2 yd, 12s	Pkg 3.20	24	62	4.7
409/421	6510-597-2361	A	BANDAGE, COTTON, PLASTER OF PARIS IMBEDGED, Hard Coated, Fast Setting, Rolled, in Waterproof Bag, 4" x 5 yd, 12s	Pkg 2.30	78	572	23.4
422/423	6510-203-5500	A	ADHESIVE TAPE, SURGICAL, Cotton Fabric Backing, 12" x 10 yd, Cut in Assorted Widths, Four 1/2", Three 1", Two 2", One 3"	Roll 1.55	48	112	5.4

SECTION V

Intravenous Solution and Transfusion Supplies

CASE NO	FEDERAL STOCK NO.	STORAGE CODE	ITEM IDENTIFICATION	UNIT OF ISSUE	TOTAL QUANTITY	WEIGHT	CUBE
427/428	6515-558-1509	A	BLOOD RECIPIENT SET, INDIRECT TRANSFUSION, Sterile Fluid Path, with Needle, Disposable Type, Field	Set .35	288	68	8.8

SECTION VI

Dental Supplies

CASE NO.	FEDERAL STOCK NO.	STORAGE CODE	ITEM IDENTIFICATION	UNIT OF ISSUE	TOTAL QUANTITY	WEIGHT	CUBE
599	6520-514-8700	A	CHISEL, DENTAL, Stout, No. 1	Each .95	1		
599	6520-515-1050	A	CHISEL, DENTAL, Wedelstaedt, No. 41	Each .61	1		
599	6520-515-1550	A	CHISEL, DENTAL, Wedelstaedt, No. 42	Each .71	1		
599	6520-519-6800	A	CURETTE, ALVEOLAR, Ovoid Shape, Sharp-edged Blade, Molt, No. 9L	Each 2.06	1		
599	6520-519-6900	A	CURETTE, ALVEOLAR, Ovoid Shape, Sharp-edged Blade, Molt, No. 10R	Each 2.03	1		
599	6520-584-2699	A	ELEVATOR, PERIOSTEAL, Double-ended, Blades Curved and Blunt, Molt, No. 9	Each 2.96	1		
599	6520-524-2550	A	ELEVATOR, ROOT, No. 34-S	Each 1.79	1		
599	6520-524-3050	A	ELEVATOR, ROOT, No. 301	Each 1.76	1		
599	6520-536-3505	A	EXCAVATOR, DENTAL, Spoon-shaped Blade, Black, No. 63	Each .70	1		
599	6520-536-3550	A	EXCAVATOR, DENTAL, Spoon-shaped Blade, Black, No. 64	Each 1.01	1		
599	6520-532-3990	A	FORCEPS, TOOTH EXTRACTING, No. 150	Each 5.36	1		
599	6520-532-4990	A	FORCEPS, TOOTH EXTRACTING, No. 151	Each 5.79	1		
599	6520-532-6000	A	FORCEPS, TOOTH EXTRACTING, No. 210	Each 7.04	1		
599	6520-532-6400	A	FORCEPS, TOOTH EXTRACTING, No. 217	Each 6.38	1		
599	6520-541-9350	A	HANDLE, MOUTH EXAMINING MIRROR, Cone Socket (For Mirror see 6520-541-8005)	Each .21	4		
599	6520-540-2050	A	MALLET, ORAL SURGERY, Hand-operated Type, Mead	Each 2.73	1		
599	6520-541-8005	A	MIRROR, MOUTH EXAMINING, Plane Glass, Cone Socket Stem, without Handle (For Handle see 6520-541-9350)	Each .25	4		
599	6520-542-2550	A	MIXING PAD, PARCHMENT PAPER, DENTAL, 6 x 8", 100 Sheets	Pad .37	2		
599	6515-559-3800	A	NEEDLE, HYPODERMIC, Dental Cartridge Type, Regular Bevel, with Stylet, Tapered, 26-27 Gage, 1", 12s (For use with Syringe, Cartridge, 6515-559-3000)	Pkg .70	1		
599	6515-559-4000	A	NEEDLE, HYPODERMIC, Dental Cartridge Type, Regular Bevel, with Stylet, Tapered, 26-27 Gage, 1-7/8", 12s (For use with Syringe, Cartridge, 6515-559-3000)	Pkg .81	1		

DENTAL SUPPLIES

CASE NO.	FEDERAL STOCK NO.	STORAGE CODE	ITEM IDENTIFICATION	UNIT OF ISSUE	TOTAL QUANTITY	WEIGHT	CUBE
599	6520-543-0150	A	PLIERS, DENTAL, No. 111, How	Each 3.40	1		
599	6520-543-3350	A	PLIERS, DENTAL, No. 136, Goslee	Each 2.78	4		
599	6520-536-5250	A	PLUGGER, PLASTIC FILLING, DENTAL, Cobalt Chromium Alloy, Double-ended, No. 1-2	Each 4.09	1		
599	6510-518-2050	A	ROLL, ABSORBENT COTTON, Sterile, 1/2 x 1-1/2", 1000s	Box 2.25	1		
599	6520-531-3150	A	RONGEUR, Bone Forceps, End Cutting, Mead, No. 1A	Each 7.89	1		
599	6520-554-8150	A	SCISSORS, COLLAR AND CROWN, Straight, Both Points Blunt, Guts Straight or Curved, Universal, 4-1/2"	Each 2.04	1		
599	6520-554-9150	A	SCISSORS, ORAL SURGICAL, Both Points Blunt, 1-1/8" Cut, Curved, 4-3/4"	Each 2.03	1		
599	6520-555-1150	A	SCISSORS, ORAL SURGICAL, Angular, Both Points Sharp, 1" Cut, Dean, 6-3/4"	Each 3.42	1		
599	6520-864-4321	A	SHELL, ALUMINUM, DENTAL, 32 Gage, Size 6, 12s	Pkg .45	1		
599	6520-864-4323	A	SHELL, ALUMINUM, DENTAL, 32 Gage, Size 8, 12s	Pkg .45	1		
599	6520-864-4325	A	SHELL, ALUMINUM, DENTAL, 32 Gage, Size 10, 12s	Pkg .45	1		
599	6520-864-4329	A	SHELL, ALUMINUM, DENTAL, 32 Gage, Size 14, 12s	Pkg .45	1		
599	6520-864-4331	A	SHELL, ALUMINUM, DENTAL, 32 Gage, Size 16, 12s	Pkg .45	1		
599	6520-864-4333	A	SHELL, ALUMINUM, DENTAL, 32 Gage, Size 18, 12s	Pkg .45	1		
599	6520-556-8000	A	SPATULA, DENTAL, Cement, Single-ended, No. 324	Each .75	1		
599	6520-299-8284	A	SPLINT SET, Arch Wire, Dental	Set 1.91	12		
599	6515-559-3000	A	SYRINGE, CARTRIDGE, Dental, Thumb Rest, Crutch Handle, with Two Long and Two Short Hubs, without Needle (For Needles see 6515-559-3800 and 6515-559-4000)	Each 1.86	2		
599	6520-501-8000	A	SYRINGE, AIR, DENTAL, Warm Air or Water, Conical Tip, with Rubber Bulb	Each .66	1		
599	6520-569-4150	A	WIRE, STEEL, CORROSION RESISTING, Suture Wire, 0.020" Diameter, 18" Long, 24 Gage, 50s	Pkg 1.25	6		
						29	2.6
600	6505-153-8379	A	EUGENOL, USP, 1 oz	Bot .78	6		
600	6505-576-8842	N	LIDOCAINE HCl INJECTION, USP, 2.0%, with Epinephrine 1:100,000, Cartridges, 1.8 ml, 50s	Car 2.60	6		

DENTAL SUPPLIES

CASE NO.	FEDERAL STOCK NO.	STORAGE CODE	ITEM IDENTIFICATION	UNIT OF ISSUE	TOTAL QUANTITY	WEIGHT	CUBE
600	6520-551-8150	N	RESIN, ACRYLIC, DENTAL, Powder and Liquid, Self-curing, Denture Base Repair, Pink, 250 Gm	Pkg 1 73	1		
600	6505-150-1000	A	ZINC OXIDE, USP, 1 lb (453.6 Gm)	Bct .51	2		
						15	0 5
601	6520-514-3255	A	CHAIR, DENTAL OPERATING, Field Type, Adjustable, Metal, Folding	Each 110.26	1	47	3 9
602	6520-538-7100	A	LIGHT, DENTAL OPERATING, FIELD, Adjustable Stand, 110V, AC-DC	Each 96 66	1	19	2 2

SECTION VII

Laboratory Supplies and Equipment

CASE NO.	FEDERAL STOCK NO.	STORAGE CODE	ITEM IDENTIFICATION	UNIT OF ISSUE	TOTAL QUANTITY	WEIGHT	CUBE
604	6640-403-0000	A	BASKET, TEST TUBE, Zinc-coated or CRS Wire, 6 x 6 x 6"	Each 1.44	4		
604	6640-403-3500	A	BEAKER, LABORATORY, Borosilicate Glass, 400 ml	Each .32	4		
604	6640-420-6000	A	CYLINDER, GRADUATED, LABORATORY, Mixing, Circular or Hexagonal Base, Calibrated to Contain, with Glass Stopper, 100 ml	Each 2.10	4		
604	6640-424-3000	A	FLASK, ERLLENMEYER, Borosilicate Glass, Rubber Stoppered Mouth, 125 ml	Each .32	6		
604	6640-426-8050	A	FUNNEL, COMMON, LABORATORY, 60° Angle, Long Stem, Glass, Smooth or Fluted, 65mm ID	Each .47	2		
604	6640-000-0108	A	RACK, TEST TUBE, 72 Tubes	Each 1.23	4		
604	6640-070-8824	A	SLIDE, MICROSCOPE, Frosted End, 25 x 75 mm, 72s	Box .97	12		
604	8125-418-7130	A	STOPPER, BOTTLE, Cork, Regular Taper, No. 3, 100s	Pkg .20	3		
604	6640-441-2000	A	STOPPER, BOTTLE, Rubber, Solid, No. 00	Each .02	200		
604	6640-408-2105	A	STOPPER, BOTTLE, Urine Specimen, Heavy Cardboard with Lift Tab, 100s (For Bottle see 6640-408-2100)	Pkg .16	12		
604	6640-443-3750	A	TEST TUBE, Culture, General Purpose, Borosilicate Glass, without Lip, Wasserman, 13 x 100 mm, Capacity 9 ml, 12s (For Stopper see 8125-418-7130)	Pkg .37	60		
604	6530-781-3673	A	TRAY, INSTRUMENT, ALUMINUM, 8 x 8 x 2"	Each .80	2		
						65	4.7
605	6515-303-8100	A	APPLICATOR, DISPOSABLE, Wood, 1/12 x 6-1/4", 864s	Pkg .33	1		
605	4320-000-0003	A	ASPIRATOR, PENBERTHY, with Universal Faucet Adapter	Each 7.75	1		
605	7920-409-5500	A	BRUSH, TEST TUBE, Tuft-end, 9" Long, 1/2" Diameter	Each .09	4		
605	6630-427-6850	A	CHAMBER, COUNTING, BLOOD CELLS, Hemacytometer (For Cover Glass see 6640-427-6875)	Each 6.10	2		
605	6640-418-0800	A	CLAMP, RUBBER TUBING, Regulating, Hoffman Type, Swivel Jaw, Screw Adjustment	Each .22	2		
605	6680-641-3205	A	COUNTER, RECIPROCATING, Hand Type Tally, 3 Wheel	Each 1.60	1		
605	6640-418-9000	A	COVER GLASS, MICROSCOPE SLIDE, 22 mm Square, 1/2 oz, 77s	Box .49	12		
605	6640-427-6875	A	COVER GLASS, MICROSCOPE SLIDE, Hemacytometer, Rectangular, 20 x 26 mm (For use with Chamber, Counting, 6630-427-6850)	Each .13	12		
605	6640-422-3810	A	DISH, BIOLOGICAL STAINING, Glass, with Dish Cover, Removable Glass Tray and Wire Tray Remover, 20 Slide	Each 2.42	1		

LABORATORY SUPPLIES AND EQUIPMENT

CASE NO.	FEDERAL STOCK NO.	STORAGE CODE	ITEM IDENTIFICATION	UNIT OF ISSUE	TOTAL QUANTITY	WEIGHT	CUBE
605	5110-234-6528	A	FILE, HAND, Tapered, Triangular, Single Cut, Slim, 6"	Each .27	1		
605	6640-426-0300	A	FORCEPS, MICROSCOPE COVER GLASS, Tweezer Type, 110 mm Long, Straight	Each .31	2		
605	6515-431-2890	A	LANCET, FINGER BLEEDING, Disposable, 100s	Pkg 1.23	24		
605	6640-736-7673	A	LOOP, INOCULATING, Nichrome, 8" Handle, 3" Wire, 25 Gage, 3 mm Loop	Each .84	1		
605	6640-435-9000	A	PAPER, FILTER, QUALITATIVE, For Medium Precipitates, 150 mm, 100s	Pkg .25	1		
605	6640-559-1384	A	PAPER, LENS, TISSUE, Heavyweight, 7 x 11", 100 Sheets	Pkg .38	1		
605	6640-290-5749	A	PIPET, BLOOD DILUTING, RED CORPUSCLE, Hemacytometer, with Mouthpiece and Rubber Tubing, 104-121 mm Long	Each .23	6		
605	6640-427-6935	A	PIPET, BLOOD DILUTING, WHITE CORPUSCLE, Hemacytometer, with Mouthpiece and Rubber Tubing, 104-121 mm Long	Each .26	72		
605	6640-034-4547	A	PIPET PROBES (Also for Needles), 50s	Pkg 1.48	1		
605	6640-437-3000	A	PIPET, SEROLOGICAL, General Purpose, Graduated to Tip at 0.01 Intervals, 1 ml	Each .44	2		
605	6640-437-4000	A	PIPET, SEROLOGICAL, Graduated to Tip at 0.01 ml Intervals, with Tube Constriction, 5 ml	Each .46	2		
605	6630-778-0971	A	READER, MICROHEMATOCRIT Tube, Slide Type (For use with Centrifuge, 6640-689-6999)	Each 1.24	1		
605	8030-000-0001	A	SEALING COMPOUND, For Microhematocrit Tubes	Pkg 1.90	1		
605	6685-444-3000	A	THERMOMETER, SELF-INDICATING, LIQUID IN GLASS, Chemical, Graduated at 1° Intervals, Minus 10° to Plus 110° C	Each .85	1		
605	6645-418-2000	A	TIMER, Interval, Clock, Alarm	Each 4.80	1		
605	6530-793-8210	A	TRAY, CATHETER, CRS, with Cover, Small, 8 x 2-1/2 x 1-1/2" ID	Each 1.83	2		
605	6640-292-0139	A	TRIPOD, LABORATORY APPARATUS, Cast Iron, 3-1/2' ID, 4-1/4" OD, 9" Legs	Each .90	1		
605	6630-618-0072	A	TUBE, CAPILLARY, BLOOD SAMPLE, Heparinized, 100s	Pkg .64	2		
605	6630-299-9837	A	TUBE, CAPILLARY, BLOOD SAMPLE, Glass, without Rubber Bulb, 1.85 mm ID, 72.5 mm Long (Nonheparinized), 100s	Pkg .39	12		
605	6630-447-0000	A	URINOMETER, Squibb Type, with Glass Float and Cylinder, Range from 1.000 to 1.060	Each 1.18	2		
						29	2.6

LABORATORY SUPPLIES AND EQUIPMENT

CASE NO.	FEDERAL STOCK NO.	STORAGE CODE	ITEM IDENTIFICATION	UNIT OF ISSUE	TOTAL QUANTITY	WEIGHT	CUBE
606	6505-100-2470	A	ACETIC ACID, GLACIAL, USP, 1 lb (453.6 Gm)	Bot .35	1		
606	6810-116-1525	A	CUPRIC SULFATE, PENTAHYDRATE, ACS, 170 Gm	Bot .45	2		
606	6640-299-9827	A	DEMINEALIZER, WATER, Hand Operated, with 16 oz Polyethylene Bottle and 4 oz Plug-in Resin Cartridge	Each 2.75	1		
606	6505-070-4321	N	DIPOTASSIUM EDETATE SOLUTION, 10.0%, 1-1/2 fl oz (Anticoagulant Solution)	Bot .49	2		
606	6640-299-9807	A	IMMERSION OIL, MICROSCOPY, 1 fl oz	Bot .28	2		
606	6630-689-7001	B	TEST PAPER, HYDROGEN ION, pH ₂ to pH ₉ (For Dispenser see 6630-000-0122)	Roll .22	5		
606	6630-000-0122	A	DISPENSER AND COLOR CHART, HYDROGEN ION, pH ₂ to pH ₉ , Empty (For Test Paper see 6630-689-7001)	Each 1.00	1		
606	6505-926-2206	B	TEST STRIPS AND COLOR CHART, URINARY BLOOD, GLUCOSE, KETONE, PROTEIN AND pH, 100s	Bot 9.33	12		
606	4720-142-2368	A	TUBING, RUBBER, Laboratory, Pure Gum Natural, Black, for Pressure, 3/16" ID, 3/16" Wall, 12 ft	Each 1.30	1		
606	4720-141-9080	A	TUBING, RUBBER, Latex, Translucent, Donor, for Blood Transfusion, 3/16" ID, 3/32" Wall	Foot .08	6		
						<u>12</u>	<u>0.6</u>
608	6810-753-4780	I	ACETONE, ACS, 1 pt (473 ml)	Bot .29	1		
608	6505-000-0651	B,I	LOEFFLER'S ALKALINE METHYLENE BLUE SOLUTION, 4 fl oz	Bot 1.00	1		
608	6505-149-6010	B,I	WRIGHT'S BLOOD STAIN TABLETS, WITH METHYL ALCOHOL (Twelve Tablets and Four 30 ml Bottles Methanol)	Pkg 1.37	2		
608	6810-753-4787	I	XYLENE, ACS (Xylo) 1 pt (473 ml)	Bot .27	1		
						<u>7</u>	<u>0.5</u>
609	6530-408-2100	A	BOTTLE, URINE SPECIMEN, Glass, Graduated, without Stopper, 6-7 oz (For Stopper see 6640-408-2105)	Each .06	72	43	2.5
610	6640-689-6999	A	CENTRIFUGE, ELECTRIC, CLINICAL MODEL, with Microhematocrit Head and Additional Head, Complete with 4 Multiple Carriers for 13 x 100 mm Test Tubes (For use with Reader, Microhematocrit, Slide Type, 6640-778-0971)	Each 109.97	1	56	2.8
611	6650-000-0201	A	MICROSCOPE, OPTICAL, MONOCULAR, 3 Objective, Complete with Light	Each 141.00	1	35	3.0
612	4720-141-9067	A	TUBING, RUBBER, Commercial Gum, Red, for Drainage and Laboratory Use, 1/4" ID, 1/16" Wall	Foot .04	350	17	1.5

SECTION VIII

X-Ray

CASE NO.	FEDERAL STOCK NO.	STORAGE CODE	ITEM IDENTIFICATION	UNIT OF ISSUE	TOTAL QUANTITY	WEIGHT	CUBE
615	6525-823-8127	A	PROCESSING MACHINE RADIOGRAPHIC PAPER AND DEVELOPER ASSEMBLY, 110V, 60 Cycle, AC, 10 Sec and 60 Sec	Each 637.79	1	112	4.8
616/618	6525-000-0007	C, Fe,	RADIOGRAPHIC PAPER AND DEVELOPER ASSEMBLY, Daylight Loading, 9-3/8 x 10-1/2", 50s	Pkg 68.71	12	150	8.4
619/620	6525-000-0013	A	X-RAY APPARATUS SET, RADIOGRAPHIC AND FLUOROSCOPIC MEDICAL FIELD TYPE, 15 MA, 110-220 V, 60 Cycle, AC, Complete with the Following Components:	Set 2,640.57	1	673	31.6
			6525-079-4132 Blocker, Half-Film, 4-7/8 x 11"	Each	1		
			6525-079-4131 Blocker, Half-Film, 5-1/2 x 9-3/4"	Each	1		
			6532-603-0011 Glove, X-Ray, Protective, Left	Each	2		
			6532-603-0012 Glove, X-Ray, Protective, Right	Each	2		
			6532-603-0990 Goggles, Darkness Adaptation	Each	1		
			6532-754-0919 Apron, X-Ray, Protective, Radiopaque	Each	1		

SECTION IX

Hospital Records and Office Supplies

CASE NO.	FEDERAL STOCK NO.	STORAGE CODE	ITEM IDENTIFICATION	UNIT OF ISSUE	TOTAL QUANTITY	WEIGHT	CUBE
623	7510-000-0001	A	CARD, INDEX AND INFORMATION (Record), 50s	Pkg .84	20		
623	7520-286-6958	A	CASE, FILING AND TRANSFER, 10" Capacity for 4 x 6" Forms	Each .68	1		
623	7530-550-7165	A	PAPER, MANIFOLD, Unglazed, 25% Rag, 18 lb, White, 8 x 10-1/2", 1000 Sheets	Pkg 1.55	3		
623	7530-000-0001	A	RECORD, CLINICAL, Hospital, 50s (PHS Form 4449)	Pkg .26	20		
623	7530-000-0002	A	RECORD JACKET, Hospital Clinical Record (PHS Form 4450)	Each .04	1000		
623	7540-634-4132	A	CLINICAL AND HEALTH RECORD FORM, HEMATOLOGY, SF 514-B, 2-Part Snapout Set, 500 Sets to Remm	Remm 1.10	2		
623	7540-634-4154	A	CLINICAL AND HEALTH RECORD FORM, MISCELLANEOUS, SF 514-M, 2-Part Snapout Set, 500 Sets to Remm	Remm 1.10	1		
623	7540-634-4130	A	CLINICAL AND HEALTH RECORD FORM, URINALYSIS, SF 514-A, 2-Part Snapout Set, 500 Sets to Remm	Remm 1.10	2		
						107	2.6
624	7530-261-3807	A	CARD SET, GUIDE FILE, ALPHABETICAL GUIDES, A to Z, 1/5 Cut with Uncoated Tab, Blue, 4 x 6"	Set .15	1		
624	7530-178-8405	A	LABEL, GUMMED, Blank, Oblong, with Red Border, 2-1/2 x 1-1/2", 30s	Box .07	50		
624	7530-239-8479	A	PAD, WRITING PAPER, White, Unruled, 5 x 8", 100 Sheets, 12s	Pkg .99	6		
624	7530-244-4037	A	PAPER, CARBON, TYPEWRITER, Black, Grade A, Lightweight, Medium Finish, 8 x 11", 100 Sheets	Box .56	3		
624	7530-246-4716	A	PAPER, BOND, 25% Rag Bond, White, 8 x 10-1/2", 500 Sheets	Remm .86	3		
624	7510-174-3205	A	PENCIL, CHINA-MARKING, Red, 12s	Box .37	6		
624	7510-285-5829	A	PENCIL, COPYING, INDELIBLE, with Mouthpiece only, Medium, 12s	Box .48	6		
624	7540-634-4162	A	CLINICAL AND HEALTH RECORD FORM, RADIOGRAPHIC, SF 519-A, 2-Part Snapout Set, 100 Sets per Pkg	Pkg .39	10		
						90	4.7
625	7530-223-7939	A	NOTEBOOK, STENOGRAPHER'S, Ruled, with Center Line, Wire-coil Bound, 6 x 9", 12s	Pkg 1.56	6	37	1.3
626	8135-292-2354	A	TAG, BLANK, Shipping, Manila, with Strings, 2-3/8 x 4-3/4", 1000s	Pkg 2.60	10	70	3.4
627	7540-000-0001	A	TAG, CLEARING STATION (DA Form 8-29)	Each .01	1200	13	0.3

SECTION X

Water Supplies

CASE NO.	FEDERAL STOCK NO.	STORAGE CODE	ITEM IDENTIFICATION	UNIT OF ISSUE	TOTAL QUANTITY	WEIGHT	CUBE
629	4730-889-2326	A	ADAPTER, BRASS, 1" IPS x 3/4" Standard Male Hosethread (Adapts 1" Female Swivel Coupler of Pump Output to Receive Hose, Garden, 4720-203-3920)	Each .52	1		
629	4730-202-8971	A	CLAMP, HOSE, 5/8" (For use with Garden Hose, Size 1/2" to 1" OD)	Each .15	12		
629	6630-417-0000	A	COMPARATOR, COLOR, Chlorine, Direct Viewing, Disk Type, with case, ppm Range, 0.1-1.0	Each 36.50	1		
629	4730-083-6528 (4730-000-0002)	A	CONNECTOR, Y-SHAPED, 3/4" (With 1 Female and 2 Male Standard Hosethreads, for use with Garden Hose)	Each .77	4		
629	4730-203-3544	A	COUPLING ASSEMBLY, HOSE, Brass, Ribbed Shank (For 5/8" Garden Hose, with Standard 3/4" Male and Female Hosethread)	Each .40	6		
629	4730-223-6731	A	NOZZLE, GARDEN HOSE, Adjustable Stream, 35 lb Pressure	Each .68	4		
629	5330-599-0776	A	WASHER, NONMETALLIC, 5/8", 10s (Used in Couplings or between Garden Hose Lengths)	Clip .05	4		
						9	0.4
630/631	6810-242-4770	A	CALCIUM HYPOCHLORITE, Technical, Powdered Bleach, 3 3/4 lbs (70% Available Chlorine)	Bot 1.33	24	116	5.2
632	4720-203-3920	A	HOSE, GARDEN, RUBBER, 5/8" ID, 3/4" Couplings, 50' Length	Each 4.87	4	55	3.0
633	5430-889-2354	A	TANK, WATER STORAGE, Knockdown, Rubber Coated Nylon Fabric, 1500 gal, with Sists, Ties and Fabric Cover	Each 428.72	1	448	34.6
634	4320-889-2321	A	WATER PUMPING UNIT, EMERGENCY, 10 GPM at 100' Head, Electric, 110-125V, AC	Each 213.14	1	215	16.6
635	4610-268-9891	A	BAG, WATER, STERILIZING, COTTON DUCK, 36 gal (Lyster Bag)	Each 29.80	3	53	7.3
636	5340-720-8864	A	PATCH, MECHANICAL, 3", with Gasket	Each 2.35	1		
636	5340-720-8863	A	PATCH, MECHANICAL, 5", with Gasket	Each 2.60	1		
636	5340-720-8858	A	PATCH, MECHANICAL, 7-1/2", with Gasket	Each 2.95	1		
						3	0.3

SECTION XI

Electrical Supplies and Equipment

CASE NO.	FEDERAL STOCK NO.	STORAGE CODE	ITEM IDENTIFICATION	UNIT OF ISSUE	TOTAL QUANTITY	WEIGHT	CUBE
637	5935-642-5331	A	ADAPTER, ATTACHMENT PLUG BODY, 2-Pole, Regular Size, 125V, 660 Watt (For Adapting Light Bulb Outlet to Standard 2-Pole Male Plug)	Each .18	12		
637	5935-000-0202	A	CONNECTOR, PLUG, ELECTRICAL, 2-Wire, Not Grounded, Rubber, 3-Way Cube Tap, Female, 15 Amp, 120V	Each .07	12		
637	5935-049-9058	A	CONNECTOR, PLUG, ELECTRICAL GORD, 2-Wire, Not Grounded, Rubber, Male, 15 Amp, 120V	Each .21	12		
637	6230-242-0005	A	FLASHLIGHT, Prefocused, General Service, 2 Cell, without Batteries (For Batteries See 6135-542-6216)	Each .49	12		
637	5920-228-4484	A	FUSE, PLUG, Electrical, Edison-base, Instantaneous, 15 Amp, 125V, 5s	Box .18	12		
637	5920-228-4481	A	FUSE, PLUG, Electrical, Edison-base, Instantaneous, 20 Amp, 125V, 5s	Box .18	12		
637	6240-143-3059	A	LAMP, INCANDESCENT, 25 Watt, 120V, Frosted, Medium Base	Each .11	40		
637	5315-000-0202	A	STAPLE, CABLE, ELECTRICIAN'S, 200s	Box .74	1		
637	5970-816-6056 (5970-644-3177)	A	TAPE, INSULATION, ELECTRICAL, Plastic, Black, Pressure Sensitive, 3/4" x 36 yd	Roll .31	6		
						30	2.6
638	6240-635-4480	A	LAMP, INCANDESCENT, 60 Watt, 120V, Frosted, Medium Base	Each .17	40		
638	6240-143-3124	A	LAMP, INCANDESCENT, 100 Watt, 120V, Frosted, Medium Base	Each .17	40		
						12	1.6
639	6135-542-6216	C	BATTERY, DRY, Flashlight, Size D, Metal, Paper or Plastic Clad, 1.5V: (For Flashlight see 6230-242-0005; also fits Laryngoscope, 6515-346-0480, Oroscope-Ophthalmoscope, 6515-781-3686; Sigmoidoscope, 6515-781-3685; Light, Head, Diagnostic, 6515-781-3038, Section III)	Each .06	192	39	0.8
640/641	6145-519-0678	A	CABLE, POWER, ELECTRICAL, Nonmetallic Sheathed, 600V, Double Conductor, Copper, 12 Gage, 250'	Coil 9.63	2	50	1.6
642	6145-188-3653	A	CABLE, POWER, ELECTRICAL, Rubber Sheathed, Double Conductor, 600V, 16 Gage, 250'	Coil 8.80	1	25	.9
643/644	6115-985-7703	A	GENERATOR, 10 KW, 120/208V, 60 Cycle, 3 Phase or Single Phase	Each 1101.86	2	2226	80.0
645	6230-000-0001	A	LIGHT, EXTENSION, TROUBLE, with Guard, Extension Cord, Reflector, and 2-Female Receptacles, 16 Gage, 50'	Each 3.59	6	35	1.5

SECTION XII

Texts and Manuals

CASE NO.	FEDERAL STOCK NO.	STORAGE CODE	ITEM IDENTIFICATION	UNIT OF ISSUE	TOTAL QUANTITY	WEIGHT	CUBE
648	7610-985-7039	A	AN OUTLINE OF THE TREATMENT OF FRACTURES (Committee on Trauma, ACS)	Each 1.00	1		
648	7610-000-0017	A	ASSEMBLING EQUIPMENT IN THE PACKAGED DISASTER HOSPITAL (F-14)	Each .15	2		
648	7610-000-0009	A	CENTRAL STERILE SUPPLY SECTION OF THE PACKAGED DISASTER HOSPITAL (F-3)	Each .28	1		
648	7610-000-0021	A	CONTROL OF COMMUNICABLE DISEASES IN MAN	Each 1 00	1		
648	7610-985-7040	A	EARLY CARE OF ACUTE SOFT TISSUE INJURIES (Committee on Trauma, ACS)	Each 1.00	1		
648	7610-985-7041	A	EMERGENCY WAR SURGERY (NATO Handbook)	Each 2.00	1		
648	7610-000-0004	A	ESTABLISHING THE PACKAGED DISASTER HOSPITAL (F-1)	Each .10	1		
648	7610-000-0023	A	FIRST AID FOR PSYCHOLOGICAL REACTIONS IN DISASTERS	Each .20	2		
648	7610-000-2000	A	GENERAL STORES SECTION OF THE PACKAGED DISASTER HOSPITAL (F-17)	Each .10	1		
648	7610-000-0013	A	NURSES' WARD MANAGEMENT GUIDE FOR THE PACKAGED DISASTER HOSPITAL (F-12)	Each .08	1		
648	7610-000-0010	A	OPERATION OF GENERATORS IN THE PACKAGED DISASTER HOSPITAL (F-5)	Each .14	1		
648	7610-000-0027	A	PHARMACY SECTION OF THE PACKAGED DISASTER HOSPITAL (F-13)	Each .08	1		
648	7610-000-2001	A	THE PACKAGED DISASTER HOSPITAL - IMPROVED MASS CASUALTY CARE (D-6)	Each 1.00	3		
648	7610-000-0015	A	THERAPEUTIC GUIDE FOR PHARMACEUTICALS IN THE PACKAGED DISASTER HOSPITAL (C-1)	Each .23	2		
648	7610-000-0011	A	WATER SUPPLY MANAGEMENT IN THE PACKAGED DISASTER HOSPITAL (F-6)	Each .12	1		
648	7610-000-0008	A	X-RAY SECTION OF THE PACKAGED DISASTER HOSPITAL (F-2)	Each .10	1		
						13	0.5

SECTION XIII

Maintenance and Housekeeping Supplies

CASE NO.	FEDERAL STOCK NO	STORAGE CODE	ITEM IDENTIFICATION	UNIT OF ISSUE	TOTAL QUANTITY	WEIGHT	CUBE
650	9110-000-0001	I	ALCOHOL, SOLIDIFIED, 2-5/8 oz (For use with Stove, One-burner, Alcohol, 7310-000-0004)	Can .09	144		
650	6260-273-9219	A	REFLECTOR, LIGHT, Gasoline Lantern, Coleman (For Lantern see 6260-170-0430)	Each 2.60	6		
650	7310-000-0004	A	STOVE, ONE-BURNER, Alcohol, Solidified (For Alcohol see 9110-000-0001)	Each .41	18		
650	4020-291-5901	A	TWINE, COTTON, Wrapping, 16-Ply, 375 yd, 1 lb	Ball .61	6		
						78	4.7
651	7920-292-4372	A	BROOM, UPRIGHT, Corn, Medium, 16-17" Long	Each 1.35	4		
651	7920-000-0205	A	BRUSH BROOM COMBINATION	Each 2.02	4		
651	7920-246-0930	A	HANDLE, MOP, Spring-lever, 54" (For Mophead see 7920-171-1148)	Each .50	6		
						72	9.9
652	7920-240-7174	A	BRUSH, SCRUB, Floor, 8" Long	Each .42	6		
652	4020-285-4196	A	CORD, COTTON, Sash, Polished, No 6, 3/16" Diameter, 100 ft	Hank 1.48	2		
652	7920-171-1148	A	MOPHEAD, WET, Cotton, Narrow Band, 8-Ply Yarn, 12 lb (For Handle see 7920-246-0930)	Each .61	12		
652	5315-753-3880	A	NAIL, COMMON, 4d, (1-1/2"), 5 lb	Pkg .97	1		
652	5315-753-3881	A	NAIL, COMMON, 6d, (2"), 5 lb	Pkg .94	1		
652	5315-753-3883	A	NAIL, COMMON, 10d, (3"), 5 lb	Pkg .91	1		
652	9505-000-0001	A	WIRE, BALING, 17 Gage, Galvanized Steel, 250 ft	Coil 1.60	1		
						46	4.6
653	8105-281-1426	A	BAG, PAPER, Grocers', Kraft, Self-opening, Popular Weight, 10 lb, 2000s	Bale 5.68	2	141	6.8
654	8105-281-1429	A	BAG, PAPER, Grocers', Kraft, Self-opening, Popular Weight, 25 lb, 1000s	Bale 5.67	2	136	7.8
655/656	8105-000-0002	A	BAG, POLYETHYLENE, 4 mil Thickness 28" Long by 30" Flat, 60" Circumference, Heat Sealed Bottom (For Commode, Portable, 6530-781-3720 and Patients Laundry)	Each .07	700	186	10.2
657/658	7240-160-0437	A	CAN, ASH OR GARBAGE, Stacking, Rust Resistant, Galvanized Steel, with Cover, 32 gal	Each 8.75	6	256	32.2
659	7240-222-3088	A	CAN, GASOLINE, Steel, 5 gal (For Spout see 7240-177-6154)	Each 2.45	5	55	5.5
660	7930-634-0342	A	DETERGENT, LAUNDRY, High Sudsing, 25 lb	Drum 3.88	4	117	3.8

MAINTENANCE AND HOUSEKEEPING SUPPLIES

CASE NO.	FEDERAL STOCK NO.	STORAGE CODE	ITEM IDENTIFICATION	UNIT OF ISSUE	TOTAL QUANTITY	WEIGHT	CUBE
661	6840-543-4016	A	INSECTICIDE, DDT, 25% Emulsion Concentrate, with Nonexplosive Solvent, 1 gal	Jug 1.77	4	51	1.4
662/664	6260-170-0430	A	LANTERN, GASOLINE, for use with Leaded Fuel, with Case (For Reflector see 6260-273-9219)	Each 12.13	15	156	12.3
665	7240-160-0455	A	PAIL, METAL, Galvanized, Wire Bail, Heavyweight, 14 qt	Each 1.35	12	85	3.5
666/669	8540-530-3769	A	PAPER, TOILET TISSUE, 1000 Sheets to Roll, 96 Compressed Rolls to Carton	Ctn 4.56	4	252	18.4
670	8135-160-7764	A	PAPER, KRAFT, Untreated, Unbleached, Wrapping, 36" Wide	Roll 4.51	2	114	4.8
671	6530-781-3720	A	COMMODE, FIELD, Collapsible, Fiberboard, Fitted with 4 mil Polyethylene Bag (For Replacement Bag see 8105-000-0002)	Each 1.16	24	97	8.0
672/679	8540-262-7178	A	TOWEL, PAPER, Single-fold, Single-ply, 7500s	Ctn 4.24	8	496	32.0
688	9920-174-3194	I	MATCH, SAFETY, 20 Matches to Book, 50 Books to Box	Box .09	12	9	0.6
689	7240-177-6154	A	SPOUT, CAN, Metal, Flexible, 16" (For Can, Gasoline, see 7240-222-3088)	Each 1.75	5	9	0.3

SECTION XIV

Tools

CASE NO.	FEDERAL STOCK NO.	STORAGE CODE	ITEM IDENTIFICATION	UNIT OF ISSUE	TOTAL QUANTITY	WEIGHT	CUBE
690	5110-293-2336	A	AX, SINGLE BIT, 4 lb Head, with Hickory Handle, 4-3/4" Cutting Edge	Each 2.80	1		
690	5120-224-1393	A	BAR, WRECKING, Gooseneck Claw and Pinch Point, 3/4 x 24"	Each 1.25	2		
690	5110-293-3385	A	CHISEL, COLD, 12" Long, 3/4" Cut	Each .82	2		
690	5120-243-2948	A	HAMMER, HAND, Carpenter's, Hickory Handle, Plain Bell Face with Curved Claw, 1-1/4 lb Head	Each 1.03	4		
690	5120-243-2985	A	HAMMER, HAND, Machinist's Ball-peen, Hickory Handle, 1/4 lb Head	Each .65	2		
690	5120-254-6618	A	HANDLE, MATTOCK-PICK, Railroad or Clay, 36", No. 6 Eye, Grade AA (For Pick see 5120-293-3401)	Each .65	2		
690	5110-228-3161	A	HATCHET, Half, 3-1/2" Cutting Edge, 14" Hickory Handle	Each 1.74	1		
690	5120-293-3401	A	PICK, DIGGING, without Handle, Railroad or Clay, Point and Chisel Ends, 6 lb (For Handle see 5120-254-6618)	Each 2.26	2		
690	5110-239-8253	A	PLIERS, DIAGONAL CUTTING, Plain, 6"	Each 1.01	2		
690	5120-223-7397	A	PLIERS, SLIP JOINT, Straight Nose, Combination Straight and Curved Jaw, with Cutter, 8"	Each .67	2		
690	5110-293-3435	A	SAW, HAND, CROSSCUT, 8 Points per Inch, 26" Blade	Each 3.28	1		
690	5120-293-3311	A	SCREWDRIVER, FLAT, Flared Tip, Common, Normal Duty, Plastic Handle, 3 x 7/32" Blade	Each .15	1		
690	5120-517-6906	A	SCREWDRIVER, FLAT TIP, Heavy Duty, Round Steel Blade, Flared Sides, Steel Handle with Wood Inserts, 4 x 5/16" Blade	Each .59	1		
690	5110-595-7771	A	SHEARS, METAL CUTTING, Tinnere, Straight Cut, Solid Steel Blades, 2-1/2 to 3-1/2" Cut, 12-1/2" Long	Each 1.50	1		
690	5120-293-3336	A	SHOVEL, HAND, General Purpose, with D Handle, Round Point, No. 2	Each 2.35	2		
690	5120-449-8083	A	WRENCH, OPEN END, ADJUSTABLE, Heavy Duty, 1-1/8" Capacity, 10" Long	Each 1.49	12		
690	5120-262-8492	A	WRENCH, PIPE, ADJUSTABLE, Normal Duty, Steel, 2" Capacity, 18" Long	Each 2.33	2		
						<u>102</u>	<u>4.0</u>

SERIES 10000 MOD "A"
PACKAGED DISASTER HOSPITAL

ALPHABETICAL INDEX

CASE NO.	NAME	PAGE	SECTION
A			
606	Acetic Acid, Glacial	51	VII
608	Acetone	51	VII
637	Adapter, Attachment Plug Body	67	XI
629	Adapter, Brass	63	X
422,423	Adhesive Tape, Surgical	35	IV
269	Airway, Pharyngeal	26	III
8	Alcohol, Denatured	4	I
650	Alcohol, Solidified	75	XIII
274-276	Anesthesia Apparatus, Gas	28,29	III
269	Anoscope, Cylindrical	26	III
269	Applicator, Wood, Cotton Tipped	26	III
605	Applicator, Wood, Plain	49	VII
605	Aspirator, Penberthy	49	VII
7	Aspirin Tablets	4	I
270	Atomizer, Medicinal	27	III
1	Atropine Sulfate Tablets	3	I
690	Ax, Single Bit	79	XIV
B			
83	Bag, Hot Water-Ice	11	II
653,654	Bag, Paper	75	XIII
655,656	Bag, Polyethylene	75	XIII
78	Bag, Cotton Duck	9	II
635	Bag, Water Sterilizing	63	X
299	Bandage, Adhesive	33	IV
408	Bandage, Cotton, Elastic	35	IV
299, 409-421	Bandage, Cotton, Plaster of Paris	33,35	IV
301,302, 317-319	Bandage, Gauze	33,34	IV
299	Bandage, Muslin	33	IV
690	Bar, Wrecking	79	XIV
1	Barium Sulfate	3	I
84	Basin, Emesis	11	II
85,86	Basin, Wash	11	II
604	Basket, Test Tube	49	VII
639	Battery, Dry, Flashlight	67	XI
604	Beaker, Laboratory	49	VII
87-89	Bedpan	11	II
9	Benzalkonium Chloride Solution	4	I
260	Blade, Surgical Knife	20	III
269	Blade, Surgical Razor	26	III
320-339	Blanket, Bed, Wool	34	IV

ALPHABETICAL INDEX CONT'D

CASE NO.	NAME	PAGE	SECTION
B (Cont'd)			
427-428	Blood Recipient Set	39	V
648	Books	71	XII
78	Bottle, Dropper	9	II
90,91	Bottle, Screw Cap, Jug Type	11	II
78,92,93,94	Bottle, Screw Cap, Prescription	9,11	II
609	Bottle, Urine Specimen	51	VII
95	Bowl, Sponge	11	II
269	Brace, Bit, Bone	26	III
651	Broom, Upright	75	XIII
651	Brush Broom Combination	75	XIII
79	Brush, Sanitary	9	II
652	Brush, Scrub, Floor	75	XIII
79	Brush, Scrub (Surgeon's Hand Brush)	9	II
605	Brush, Test Tube	49	VII
303	Buckle, Webbing, Textile	33	IV
269	Bulb, Rubber	26	III
269	Bur, Cranial	26	III
79	Burner, Alcohol	9	II
C			
640-642	Cable, Power, Electrical	67	XI
630,631	Calcium Hypochlorite	63	X
657,658	Can, Ash or Garbage	75	XIII
659	Can, Gasoline	75	XIII
270	Cannula, Tracheotomy	27,28	III
299	Cap, Operating, Surgical	33	IV
623	Card, Index and Information	59	IX
624	Card Set, Guide File	59	IX
623	Case, Filing and Transfer	59	IX
261,269	Catheter, Urethral	20,21,26	III
610	Centrifuge, Electric	51	VII
601	Chair, Dental Operating	45	VI
605	Chamber, Counting	49	VII
257	Chisel, Bone	18	III
690	Chisel, Cold	79	XIV
599	Chisel, Dental	43	VI
2	Chloramphenicol Capsules	3	I
69	Chlorpromazine HCl Injection	4	I
69	Chlorpromazine HCl Tablets	4	I
269	Clamp, Artery	26,27	III
629	Clamp, Hose	63	X
257	Clamp, Intestinal	18	III
605	Clamp, Rubber Tubing, Adjustable	49	VII
78	Clamp, Rubber Tubing, Shutoff	9	II

ALPHABETICAL INDEX CONT'D

CASE NO.	NAME	PAGE	SECTION
C (Cont'd)			
257	Clip, Suture	18	III
269	Clipper, Hair, Surgical	26	III
303	Cloth, Cotton	33	IV
671	Commode, Field	76	XIII
629	Comparator, Color, Chlorine	63	X
341-343, 347-349	Compress and Bandage	34	IV
257	Conductor, Bone Cutting	18	III
629	Connector, Garden Hose, Y-shaped	63	X
637	Connector, Plug, Electrical	67	XI
79	Connector, Rubber Tubing, 5 in 1	9	II
78	Connector, Rubber Tubing, Y-shaped	9	II
652	Cord, Cotton, Sash	75	XIII
96-195	Cot, Folding	11	II
196-201	Cot, Litter	11	II
605	Counter, Reciprocating	49	VII
629	Coupling Assembly, Garden Hose	63	X
605	Cover Glass, Microscope Slide	49	VII
202,203	Crutch, Adjustable	11	II
204,205,206	Cup, Paper	11	II
606	Cupric Sulfate	51	VII
599	Curette, Alveolar	43	VI
257	Curette, Uterine	18	III
257	Cutter, Bone Pin	18	III
604	Cylinder, Graduated, Laboratory	49	VII
D			
606	Demineralizer, Water	51	VII
257,258	Depressor, Tongue	18	III
660	Detergent, Laundry	75	XIII
2	Dextrose Injection	3	I
353	Diaper	34	IV
1	Digitoxin Tablets	3	I
2	Digoxin Injection	3	I
257	Dilator, Uterine	18	III
606	Dipotassium Edetate Solution	51	VII
258	Director and Tongue Tie	18	III
605	Dish, Biological Staining	49	VII
606	Dispenser and Color Chart	51	VII
277-286	Drainage and Suction Apparatus	29	III
301, 354-357	Drape, Surgical	33,34	IV
304	Dressing, First Aid	34	IV
258	Drill, Bone	18,19	III
260	Dusting Powder	20	III

ALPHABETICAL INDEX CONT'D

CASE NO.	NAME	PAGE	SECTION
E			
599	Elevator, Dental	43	VI
258	Elevator, Periosteal, Sayre	19	III
10-21	Enteral Feeding Formula	4	I
2	Epinephrine Injection	3	I
708-712	Ether	5	I
600	Eugenol	44	VI
599	Excavator, Dental	43	VI
F			
358	Felt Sheet	34	IV
605	File, Hand, Triangular	50	VII
258	Filiform, Urethral	19	III
637	Flashlight	67	XI
604	Flask, Erlenmeyer	49	VII
254,258,259	Forceps	17,19	III
605	Forceps, Microscope Cover Glass	50	VII
599	Forceps, Tooth Extracting	43	VI
207-211	Frame, Overhead	11	II
79	Funnel, Aluminum	9	II
604	Funnel, Glass	49	VII
637	Fuse, Electrical	67	XI
G			
254	Gag, Metal	17	III
302, 307,308	Gauze, Absorbent	33,34	IV
643,644	Generator	67	XI
260,262	Gloves, Surgeons	20,22	III
254	Gouge, Bone	17	III
359-361	Gown, Operating	34	IV
362-365	Gown, Patient	34	IV
79	Graduate, Liquid	9,10	II
H			
690	Hammer, Hand	79	XIV
254	Handle, Bone Cutting Wire Saw	17	III
690	Handle, Mattock-pick	79	XIV
651	Handle, Mop	75	XIII
599	Handle, Mouth Examining Mirror	43	VI
254	Handle, Surgical Knife	17	III
690	Hatchet, Half	79	XIV
254	Headband, Mirror	17	III
254,269	Holder, Suture Needle	17,27	III
632	Hose, Garden	63	X

ALPHABETICAL INDEX CONT'D

CASE	NAME	PAGE	SECTION
H (Cont'd)			
2	Hydrocortisone Sodium Succinate Inj.	3	I
1	Hydrocortisone Tablets	3	I
I			
606	Immersion Oil	51	VII
287	Inhalator	29	III
270	Inhaler, Anesthesia	28	III
661	Insecticide	76	XIII
6	Insulin Injection	4	I
212	Irrigator	12	II
26-31	Isopropyl Alcohol	4	I
J			
80	Jar, Forceps	10	II
213	Jar, Surgical Dressing	12	II
K			
254	Knife, Craftsman's	17	III
254	Knife, Ear	18	III
L			
624	Label, Gummed	59	IX
637,638	Lamp, Incandescent	67	XI
605	Lancet, Finger Bleeding	50	VII
662-664	Lantern, Gasoline	76	XIII
80	Lid, Metal Pail	10	II
2	Lidocaine HCl Injection	3	I
600	Lidocaine HCl with Epinephrine Inj.	44	VI
270	Ligature, Umbilical	28	III
602	Light, Dental Operating	45	VI
645	Light, Extension, Trouble	67	XI
270	Light, Head, Diagnostic	28	III
214-219,713-718	Light, Surgical	12, 13	II
220-224	Liner, Bedpan	12	II
225-228,700-707	Litter, Folding	12	II
608	Loeffler's Solution	51	VII
605	Loop, Inoculating	50	VII
1	Lubricant, Surgical	3	I

ALPHABETICAL INDEX CONT'D

CASE NO.	NAME	PAGE	SECTION
M			
263	Magnifier, Binocular	22	III
263	Mallet, Bone Surgery	22	III
599	Mallet, Oral Surgery	43	VI
263	Manometer, Spinal Fluid	22	III
305	Mask, Surgical	34	IV
688	Match, Safety	76	XIII
80	Medicine Glass	10	II
611	Microscope	51	VII
263	Mirror, Headband	22	III
263	Mirror, Laryngeal	22	III
599	Mirror, Mouth Examining	43	VI
599	Mixing Pad, Parchment Paper	43	VI
652	Mophead, Wet	75	XIII
N			
652	Nail, Common	75	XIII
263	Needle, Hypodermic	22,23	III
599	Needle, Hypodermic, Dental	43	VI
263,269	Needle, Suture	23,27	III
33-40	Nitrous Oxide	4	I
625	Notebook, Stenographer's	59	IX
629	Nozzle, Garden Hose	63	X
79	Nozzle, Rectal	10	II
79	Nozzle, Vaginal	10	II
O			
264	Otoscope and Ophthalmoscope Set	24	III
41-60	Oxygen	4	I
P			
306	Pack, Gauze, Abdominal	34	IV
366	Pad, Abdominal	35	IV
306	Pad, Eye	34	IV
367	Pad, Sanitary	35	IV
624	Pad, Writing	59	IX
229	Pail, CRS	12	II
665	Pail, Galvanized	76	XIII
624	Paper, Bond	59	IX
624	Paper, Carbon	59	IX
605	Paper, Filter	50	VII
670	Paper, Kraft	76	XIII
605	Paper, Lens	50	VII

ALPHABETICAL INDEX CONT'D

CASE NO.	NAME	PAGE	SECTION
P (Cont'd)			
623	Paper, Manifold	59	IX
666-669	Paper, Toilet Tissue	76	XIII
636	Patch, Water Tank	63	X
624	Pencil, China-marking	59	IX
624	Pencil, Copying	59	IX
263	Pencil, Skin-marking	23	III
1	Petrolatum, White	3	I
61	Phenobarbital Tablets	4	I
690	Pick, Digging	79	XIV
368-391	Pillow, Bed	35	IV
392,393	Pillowcase	35	IV
1	Pilocarpine HCl Ophthalmic Ointment	3	I
263	Pin, Bone	24	III
79,81	Pin, Safety	10	II
81	Pin, Straight	10	II
605	Pipet, Blood Diluting	50	VII
81	Pipet, Dropping	10	II
605	Pipet Probes	50	VII
605	Pipet, Serological	50	VII
230	Pitcher, Clinical Solutions	12	II
599	Pliers, Dental	44	VI
690	Pliers, Diagonal Cutting	79	XIV
690	Pliers, Slip Joint	79	XIV
599	Plugger, Plastic Filling, Dental	44	VI
22,23	Potassium Penicillin G for Injection	4	I
2	Potassium Penicillin G Tablets	3	I
264	Probe, General Operating	24	III
6	Procainamide HCl Injection	4	I
615	Processing Machine	55	VIII
2	Promethazine HCl Injection	3	I

R

604	Rack, Test Tube	49	VII
616-618	Radiographic Paper	55	VIII
264	Razor, Surgical Preparation	24	III
605	Reader, Microhematocrit	50	VII
623,624	Record, Clinical	59	IX
623	Record Jacket	59	IX
650	Reflector, Light	75	XIII
623,624	Report Forms	55	IX
600	Resin, Acrylic, Dental	45	VI
264,265	Retractor	24	III
233	Rod, Irrigator Supporting	12	II
599	Roll, Absorbent Cotton	44	VI
599	Rongeur, Bone Forceps	44	VI
266	Rongeur, Cranial	24	III

ALPHABETICAL INDEX CONT'D

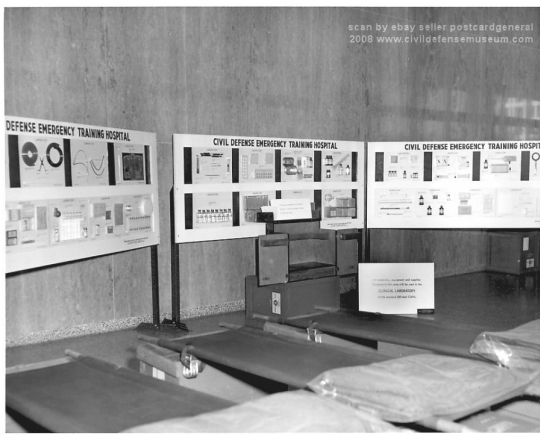
CASE NO.	NAME	PAGE	SECTION
S			
266	Saw, Amputating	24	III
266	Saw, Bone Cutting	25	III
690	Saw, Hand	79	XIV
266	Saw, Plaster Cast	25	III
266,269	Scissors, Bandage	25,27	III
599	Scissors, Dental	44	VI
266	Scissors, Surgical	25	III
690	Screwdriver	79	XIV
605	Sealing Compound	50	VII
690	Shears, Metal Cutting	79	XIV
266	Shears, Plaster Cast Cutting	25	III
394-401	Sheet, Bed	35	IV
231,232	Sheet, Plastic	12	II
599	Shell, Dental	44	VI
690	Shovel, Hand	79	XIV
266	Sigmoidoscope	25	III
1	Silver Nitrate	3	I
604	Slide, Microscope	49	VII
80	Sling, Head and Shoulders	10	II
63,64	Soap, Surgical	4	I
65,66	Soda Lime	4	I
2	Sodium Chloride Injection	4	I
68	Sodium Chloride-Sodium Bicarbonate	4	I
1	Sodium Diphenylhydantoin Capsules	3	I
2	Sodium Thiopental for Injection	4	I
266	Sound, Uterine	25	III
599	Spatula, Dental	44	VI
267	Speculum, Vaginal	25	III
268	Sphygmomanometer	25	III
267	Splint, Arm	25	III
289	Splint Attachment	30	III
268	Splint, Hand	26	III
288	Splint, Leg	29	III
599	Splint Set, Dental	44	VI
269	Splint Support and Footrest	27	III
273	Splint, Wire, Ladder	28	III
305,306	Sponge, Surgical	34	IV
689	Spout, Can	76	XIII
267	Spreader, Plaster Cast	25	III
234-239	Stand, Surgical Instrument	12	II
637	Staple, Cable, Electrician's	67	XI
240,241	Sterilizer	12	II
267	Stethoscope	25	III
302,303	Stockinet, Surgical	33	IV
268	Stone, Sharpening	26	III

ALPHABETICAL INDEX CONT'D

CASE NO.	NAME	PAGE	SECTION
S (Cont'd)			
604	Stopper, Bottle	49	VII
650	Stove, Alcohol	75	XIII
268	Styler, Catheter	26	III
290-295	Suction and Pressure Apparatus	30	III
72	Sulfadiazine Tablets	5	I
242-244	Support, Litter	12	II
261	Suture, Absorbable	21	III
261	Suture, Nonabsorbable	21,22	III
599	Syringe, Air, Dental	44	VI
599	Syringe, Cartridge, Dental	44	VI
296	Syringe, Glass, Bulb	30	III
269,271	Syringe, Luer	27,28	III
T			
245-249	Table, Operating	13	II
626	Tag, Blank, Shipping	59	IX
627	Tag, Clearing Station	59	IX
633	Tank, Water Storage	63	X
637	Tape, Insulation, Electrical	67	XI
606	Test Paper, Hydrogen Ion	51	VII
606	Test Strips and Color Chart	51	VII
604	Test Tube	49	VII
6	Tetanus Toxoid	4	I
1	Tetracaine HCl	3	I
1	Tetracaine Ophthalmic Ointment	3	I
2	Tetracycline HCl Capsules	4	I
32	Tetracycline HCl for Injection	4	I
82	Thermometer, Clinical	10	II
605	Thermometer, Laboratory	50	VII
605	Timer	50	VII
82	Tip, Cane and Crutch	11	II
402-406	Towel	35	IV
672-679	Towel, Paper	76	XIII
250,251	Traction Apparatus	13	II
269	Tractor, Salvatore	27	III
605	Tray, Catheter	50	VII
604	Tray, Laboratory	49	VII
81,82	Tray, Instrument	10,11	II
1	Tripelethamine HCl Tablets	3	I
605	Tripod, Laboratory Apparatus	50	VII
605	Tube, Capillary, Blood Sample	50	VII
273	Tube, Colon, Surgical	28	III
260	Tube, Drainage, Surgical	20	III
260	Tube, Duodenal, Surgical	20	III

ALPHABETICAL INDEX CONT'D

CASE NO.	NAME	PAGE	SECTION
T (Cont'd)			
81	Tube, Irrigator, Surgical	10	II
260	Tube, Stomach, Surgical	20	III
606,612	Tubing, Rubber	51	VII
650	Twine, Cotton	75	XIII
U			
252	Urinal, Male Patient	13	II
605	Urinometer	50	VII
W			
301	Wadding, Cotton, Surgical	33	IV
629	Washer, Nonmetallic	63	X
73,74	Water for Injection, Sterile	5	I
634	Water Pumping Unit	63	X
260	Wax, Bone	20	III
303	Webbing, Textile	33	IV
652	Wire, Baling	75	XIII
599	Wire, Dental	44	VI
301,407	Wrapper, Sterilization	33,35	IV
690	Wrench, Open End, Adjustable	79	XIV
690	Wrench, Pipe, Adjustable	79	XIV
608	Wright's Blood Stain Tablets	51	VII
X			
619,620	X-Ray Apparatus Set	55	VIII
608	Xylene	51	VII
Z			
600	Zinc Oxide	45	VI



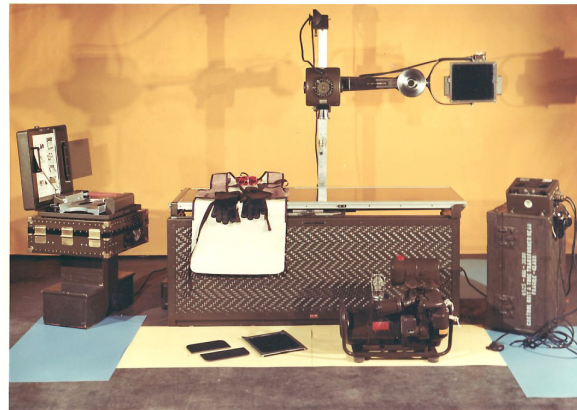
Clinical Laboratory Supplies
[stretchers are a part of the Admitting supplies]



Pharmacy Supplies



X-Ray Supplies



**X-Ray Section
(details)**



Operating Supplies



**Operating Room Section
(details)**



Admitting & Triage Sorting Supplies



Ward Section
[X-Ray and Operating Rooms in background]



Auxiliary Electrical Generator



Auxiliary Water Supply



Civil Defense Emergency Hospital
packaged, palletized, and stored